



# 2019 Annual Report

  
**INTERLOCHEN**  
*Center for the Arts*



Dear Interlochen Family and Friends,

Thank you for a momentous year. Your passionate support makes a tremendous impact on young artists, public radio, and the future of the arts at Interlochen and beyond.

In May, you joined with fellow donors, alumni, parents, faculty, staff, students, volunteers, and friends to celebrate the many achievements of CREATE AMAZING. The dedication of the new, state-of-the-art Music Center demonstrated that anything is possible when we work together.

Your support also strengthens our outreach to the local community, especially through Interlochen Public Radio. IPR is interwoven into northern Michigan's fabric of life and intersects Interlochen's past with our present and future. Through archival broadcasts, national programming, and original programming, IPR unites our community and brings Interlochen to the world.

And, your support embraces our shared vision for Interlochen. When young artists arrive on campus, they know they have reached their destination — a place to transform their passion and potential into purpose. Moving forward, with you, my priorities are to:

- Expand access for young artists through endowed and annual scholarships
- Enrich program excellence by investing in faculty and visiting artists
- Increase touring and other exceptional learning opportunities for students
- Complete the expanded Dance Center and construct Dow House, a new convertible residence hall with visiting artist suites.

I extend my deepest gratitude for your support. Together, we can empower art to transform lives and the world.

With gratitude,

Trey Devey  
President

P.S. Please enjoy the special enclosed CREATE AMAZING gratitude report!



# TABLE OF CONTENTS

Your Impact	4
Interlochen Annual Fund	8
Interlochen Public Radio	10
Financials in Review	12
Interlochen Volunteers	15
Interlochen Donors	19
Heritage Society	34
Financial Statements	36
Board of Trustees	40

Interlochen was founded in 1928 and is located in beautiful northwest lower Michigan. Each year, thousands of artists and arts patrons come to Interlochen to experience world-class educational and cultural opportunities. Students study comparative arts, creative writing, dance, motion picture arts, music, theatre, and visual arts, inspired by the scenic beauty of our campus and guided by outstanding faculty and guest artists.

Interlochen is dedicated to supporting lifelong arts engagement through Interlochen Arts Academy, Interlochen Arts Camp, Interlochen Public Radio, Interlochen Presents, and Interlochen College of Creative Arts.

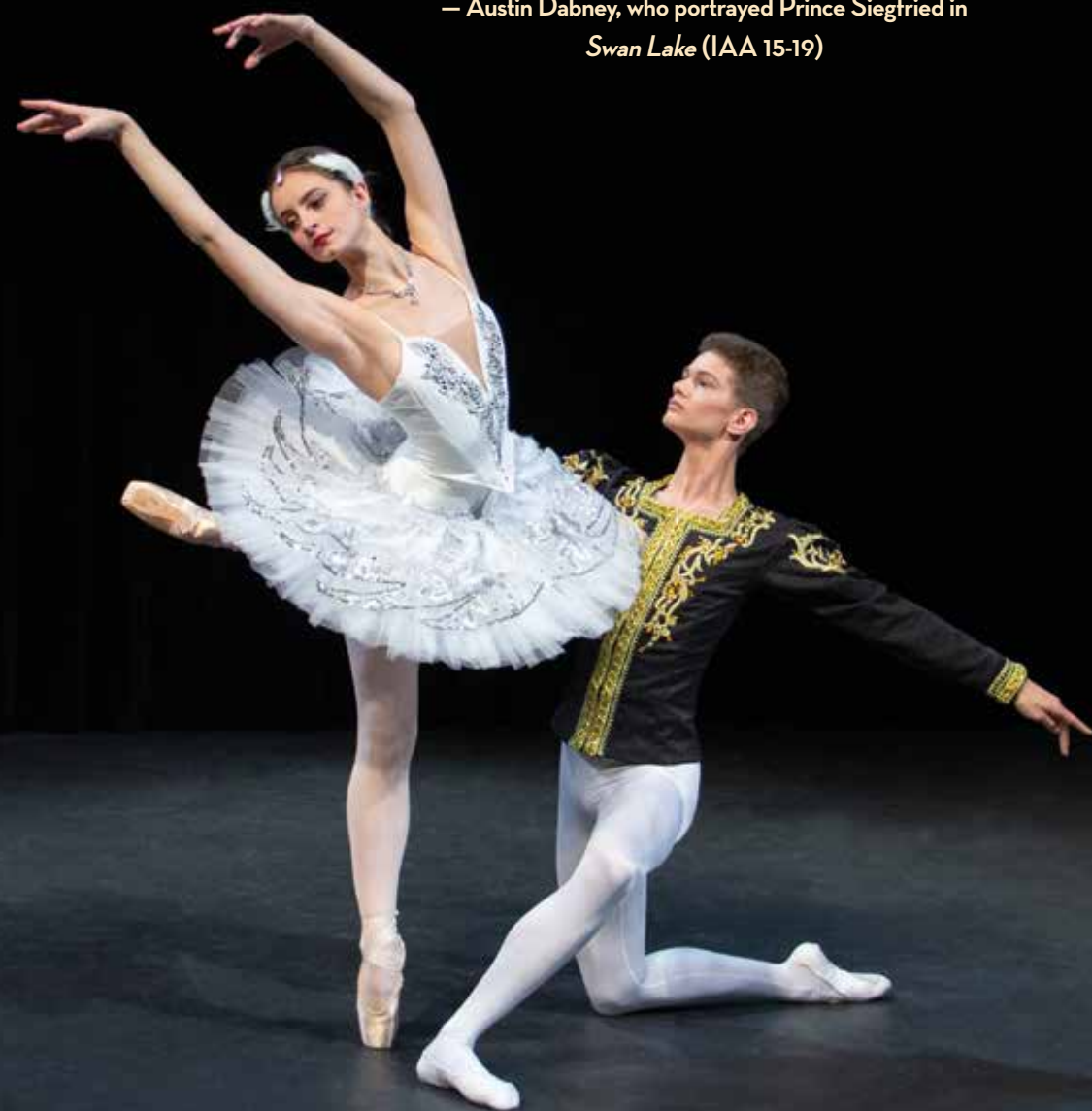
## THANK YOU

### for giving young artists the opportunity of a lifetime.

Your generosity helped young artists develop as citizen-artists, tour the country, and learn from leading artists. They collaborated on new works, gave riveting performances, and achieved high honors for their passion and dedication.

#### Touring

Dancers debuted Interlochen's first full-length *Swan Lake* and shared it with audiences in Bay Harbor, Cheboygan, and Midland. These opportunities help students prepare for professional careers, including Austin, who joined Boston Ballet after graduation.



“If it wasn't for you, I would not be sharing the stage with my best friend and dancing to the most glorious music.”

— Austin Dabney, who portrayed Prince Siegfried in *Swan Lake* (IAA 15-19)



RESOLVE performance at National Sawdust

#### Collaborating

Students posed challenging questions and nurtured inspiration through *RESOLVE*. At National Sawdust, they performed with alumnus Sydney James Harcourt. At Carnegie Hall, the Arts Academy Band and Dance Company premiered *Resolve!* by Clint Needham and choreographed by Loni Landon. Conductor Allan McMurray and the Factory Seconds Brass Trio joined in this response to the shooting at Marjory Stoneman Douglas High School in Parkland, Florida.

“Through developing these productions, our students have had the opportunity to collaborate with each other and with world-class artists. They have also learned how to produce a professional-quality performance and how to use their artistic talents to advocate for positive change.”

— Dr. Camille Colatosti, Provost



Sophie Paquette, 46th Presidential Scholar

#### Award-Winning

Sophie Paquette was selected as Interlochen's 46th Presidential Scholar in the Arts. Interlochen has more Presidential Scholars than any other high school in the nation. Sophie is the Creative Writing division's 20th scholar. (Read her poem “aperture” on page 14.)

“At Interlochen, my art was treated not as a hobby or extracurricular but as a priority. The professionalism with which the faculty approached classrooms, office hours, and studio time fostered an incredibly productive environment. I am so grateful for my time as a student!”

— Sophie Paquette (IAC 17, IAA 17-18)



Martin Chalifour (left) and Dennis Kim (right)

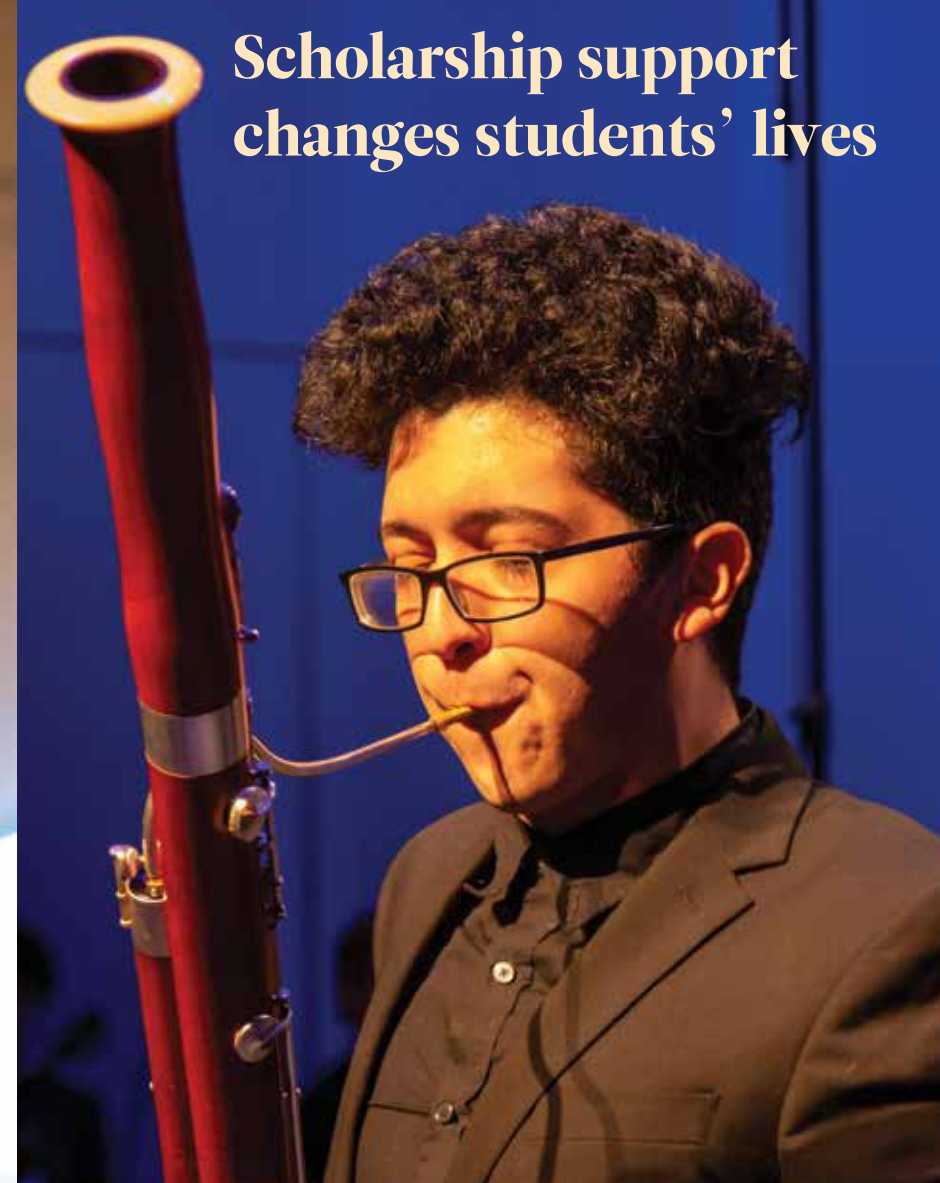
### Guest Artists

World Youth Symphony Orchestra musicians performed under leading conductors Mei-Ann Chen, Dr. Leslie B. Dunner, JoAnn Falletta, Cristian Măcelaru, Erik Nielsen, and Jung-Ho Pak. These young musicians also worked with and played alongside the Detroit Symphony Orchestra during the orchestra's first Interlochen residency since 2006.

“This is my fourth year at Interlochen. It is an incredible place... It's an incredible group of kids who learn so quickly, adjust, and adapt. That's why I come back every summer. It is really exciting to see these young artists develop so quickly.”

— Dennis Kim, Valade Concertmaster, World Youth Symphony Orchestra

## Scholarship support changes students' lives



“I thought there was no possibility of coming to Interlochen, until supporters and teachers helped me to be here. Now I will be able to apply everything I learn, to be a better musician, and to be closer to my dream.”

— Luis Marquez Teruel (IAA 17-19, IAC 18-19)

### New Programming

Along with established programs, Camp students explored new programs in slam poetry and music production, as well as expansions in jazz, rock & pop, and animation.

With a gift from Interlochen Trustee Bill and Linda Nelson, students will have increased opportunity to share their performances through Interlochen Public Radio. Starting in fall 2019, the new Music Production & Engineering major will allow young artists to record and produce performances from their peers for broadcast.

“This new major will usher in an era where students see themselves as curators of music, and IPR becomes a visible part of Academy life.”

— Peter Payette, Executive Director, Interlochen Public Radio

### Valade Concertmasters

Concertmasters helped Camp musicians hone their artistic and technical skills:

**Timothy Lees** – Violin Faculty, University of Cincinnati College-Conservatory of Music; Former Concertmaster, Cincinnati Symphony Orchestra

**Martin Chalifour** – First Violin, Principal Concertmaster, Marjorie Connell Wilson Chair, Los Angeles Philharmonic

**Dennis Kim** – First Violin, Concertmaster, Eleanor and Michael Gordon Chair, Pacific Symphony; Violin Faculty, The Glenn Gould School and The Taylor Academy, The Royal Conservatory of Music

**Celeste Golden Boyer** – Second Associate Concertmaster, St. Louis Symphony Orchestra

**Jeff Thayer** – Deborah Pate and John Forrest Concertmaster Chair, San Diego Symphony; Founding Member, Camera Lucida Chamber Music Ensemble, Conrad Prebys Music Center, University of California, San Diego

“ What the role of Quasimodo gave to me was freedom I have never experienced before... I am endlessly grateful for what that experience and Interlochen have given me. ”

— Sasha Manzetti, who portrayed Quasimodo in *The Hunchback of Notre Dame* (IAA 15-19, IAC St 19)



## Interlochen Annual Fund

Thank you for championing a young artist through your annual support!

3,722 supporters joined together to give more than \$2 million through the Create Amazing Opportunities Challenge. Sparked by Interlochen Trustee Dr. Mohamed A. El-Erian, this challenge unlocked \$100 for every Interlochen Annual Fund supporter. Your outpouring of generosity increased access for students and gave 140 Camp and Academy students the opportunity to turn their Interlochen dreams into reality.

Once students arrived, your support enriched their experience. You helped students work with guest artists like pianist and composer Conrad Tao; classical violinist Stefan Jackiw; and inter-

disciplinary visual artist, writer, and performer Kenyatta A.C. Hinkle. You also supported touring, costumes, film supplies, and much more including *The Hunchback of Notre Dame*, *Alice*, and a suite from Duke Ellington’s “The River.”

“ I’ve seen firsthand how the power of the arts can change the trajectory of a student’s life. It was amazing and inspiring to see more than 3,500 donors help unlock extra scholarship support for exceptional students who might have otherwise missed the opportunity to attend Interlochen because of financial circumstances. ”

— Dr. Mohamed A. El-Erian

Interlochen  
for the Arts

“ I’m thankful for all the support and love I received at Interlochen. This place gave me the room to grow, succeed, and be part of a family. ”

— Angelica Bohanan (IAA 15-19, IAC St 19)



President’s Choice Visual Arts Awards  
*Missing and Murdered Indigenous Women, Not Forgotten*



## INTERLOCHEN PUBLIC RADIO

Thank you for bringing national programs like *All Things Considered* and stories only IPR can tell to your neighbors and the world.

By supporting the IPR Annual Fund, you also helped IPR expand conservation journalism, which explores how northern Michigan's burgeoning economy can complement ecosystem management.

Through Red Pine Radio, a core of community producers now craft their own stories about life in northern Michigan. These stories and more are heard on *Points North*, a new weekly show that connects you with life in the region.

And through the generous support of Barbara Alldredge, IPR will strengthen its commitment to the next generation of journalists through new intern housing. IPR's intern program is robust, with many interns becoming full-time reporters, including award-winning *Morning Edition* host, Dan Wanschura.

### Thank you for giving the gift of music through live broadcasts and captivating programming.

*Kids Commute* ventured into the community, including at schools and on the stage with the Interlochen Arts Academy Wind Symphony. Inspiring children and their families with a love of classical music, *Kids Commute* received a Bronze Award in the Best Children/Young Adult Program category at the New York Festivals International Radio Awards.

In a new partnership with WRCJ Detroit and WKAR Lansing, IPR increased broadcasts of Michigan performances through the weekly Great Lakes Concerts series.

IPR also brought you interviews and performances by Interlochen musicians and guest performers from Studio A along with past performances through weekly archival broadcasts on *The Interlochen Collection*. IPR listeners are now downloading the IPR app to stay connected to Interlochen wherever they may be.

### Sustainer's Challenge exceeds expectations - Thank you!

“ This additional gift is from both of us. We appreciate the fact that a Board member is giving \$100 to Interlochen for every new and increased sustaining gift. What a treasure. Thank you. ”

— Rick and Chris Walter, IPR sustainers

More than 300 supporters banded together to unlock \$28,000, including 152 new sustainers and 176 sustainers who increased their gifts.

**\$15.7** MILLION

Total scholarships and financial aid awarded to Interlochen students in fiscal year 2019



## THANK YOU for creating community this year with your generosity!

### BY THE NUMBERS: FISCAL YEAR 2019 IN REVIEW

#### STUDENT ENROLLMENT

##### Interlochen Arts Camp:

2,755 Camp students from 53 U.S. states and territories and 40 countries and territories

##### Interlochen Arts Academy:

528 students from 44 U.S. states and territories and 29 countries and territories

#### SCHOLARSHIPS AND FINANCIAL AID

Interlochen provided \$15.7 million in financial assistance to over 1,200 Interlochen students

#### OPERATING BUDGET

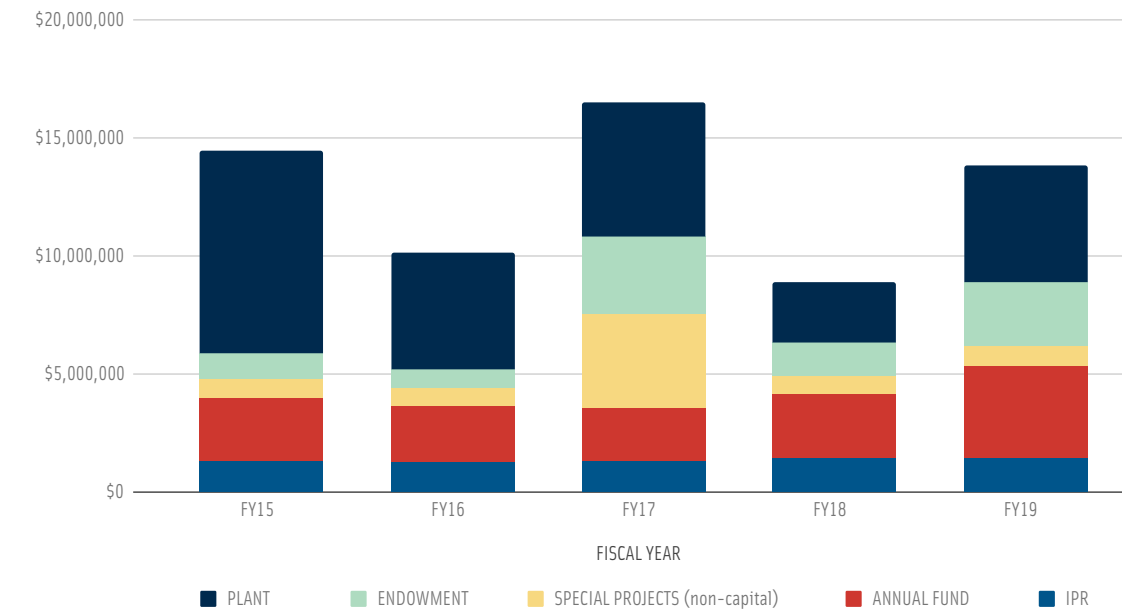
Revenue:	\$46,804,695
Expenses:	\$44,984,047

#### FUNDRAISING

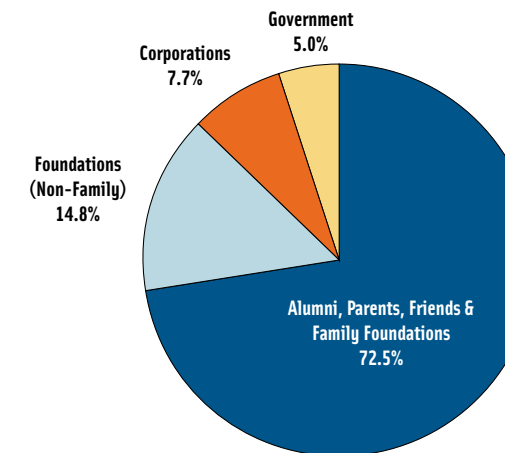
Interlochen Annual Fund:	\$ 3,712,233
Interlochen Public Radio:	\$ 1,443,665
Endowment and Capital Funds:	\$ 8,692,615
<b>Total</b>	<b>\$13,848,513</b>

Comprehensive financial reports may be found on pages 36 through 39 of this report. Complete audited financial statements are available online at [www.interlochen.org/support](http://www.interlochen.org/support) or by calling our Advancement Office at 231.276.7623.

#### HERE'S HOW YOU SUPPORTED INTERLOCHEN

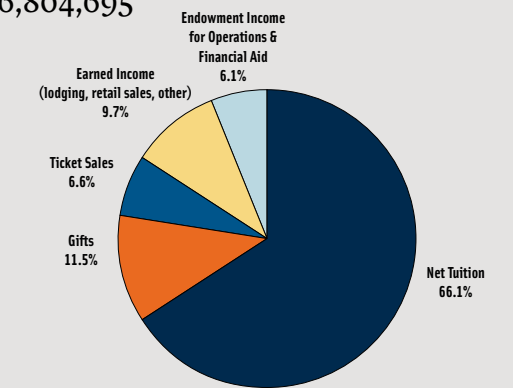


#### INTERLOCHEN'S CONTRIBUTIONS AND GRANTS



#### REVENUE

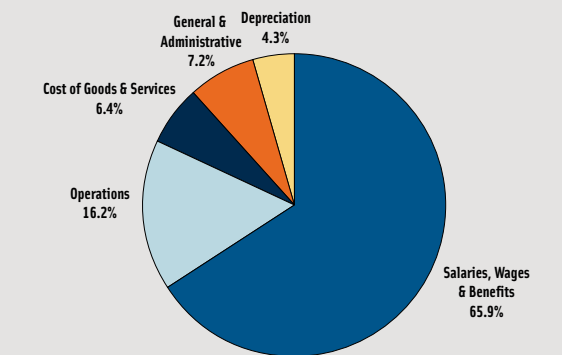
\$46,804,695



Net tuition accounted for more than two-thirds of Interlochen's operating income, which totaled \$46.8 million in fiscal year 2019. Philanthropic support provided by current gifts and endowment income accounted for 17.6% of the total revenue. Annual giving helps maintain our generous financial aid program and supports other critical operations, from performances to public radio.

#### EXPENSES

\$44,984,047



Interlochen's operational expenses totaled \$44.9 million in fiscal year 2019. Our investment in people, the heart of the Interlochen experience, continues to be our most significant expense.



# aperture

By Sophie Paquette

I fit in on the swim team as in: I train my body to fit into every space it enters team means your body ceases to be your own but belongs to a fleet of limbs when we sprint the trick is who can keep her chin tucked without coming up to breathe we practice aperture learn to fill our bellies with air stitch lips silent we count laps, count breath, count pulse who can survive the quietest after practice I stand in my mirror turn and turn until skin undresses from bone the body beneath shiny like a pool's surface so translucent it reflects back into itself once I counted everything I let enter my body once the silence between my heart beats was an exercise in slowness once my swimsuit hung loose, clung to my stomach like an extra skin so badly I wished for my ribs to kiss the surface come up to breathe girl means our bodies belong to any hand who wants it hinges at the thumb and pries us open means our fault for growing this skin and expecting to own it ask for proof every fist visited before and we shell like fruit gut for evidence we shower after practice and the drain clogs: loose hair dead skin fish ribs someone else's hands a hungry mouth sunk into flesh the locker room floods we rise suspended bodies untouched and clean we live here forever a million gilled sisters so good at holding our breath

# THANK YOU, volunteers, for your passion and dedication!



“Sometimes to achieve a sense of wholeness in our lives, we step back from our routines and donate time, energy, and talents to benefit a chosen community. We serve as volunteers rather than for financial reward. We volunteer for Interlochen Center for the Arts because we are dedicated to and believe in preparing the students for artistic careers.

Whether we sew costumes, plant flowers, usher at events, answer telephone pledges to Interlochen Public Radio, or drive shuttle carts to get patrons from parking lots to performance venues, we do it with a sense of commitment that we are providing much-needed local support for a world-class institution ... Since 1993, I have served with remarkably talented and committed professionals and volunteer workers. My real reward has been to serve Interlochen in any capacity where I can make a significant contribution.”

— Ted Beiderwieden, Volunteer of the Year 2018 and 2019

Students, alumni, concertgoers, and friends were welcomed throughout the year by our invaluable volunteers. This fiscal year, **578 volunteers** generously donated a total of **15,150 hours**, an estimated value of **\$385,265**.

For the second consecutive year, Ted Beiderwieden was honored as Volunteer of the Year. A special thank you to Ted, along with 29 additional volunteers who have helped Interlochen for more than 20 years.



# THANK YOU to our volunteers!

Trudy Aardema	Eileen Bora	Bruce Corner	Rachel Eskenazi-Gold	Catherine Haines	Thomas Jackson	Lisa Laplace Smith	Dennis McIntosh	Patty Oehmke	Benjamin Roll	Toni Sober	Deborah Valice
Aaron Albert	Judith Bosma	Cheryl Correll	Doug Essenmacher	Elizabeth Halajian	Martha Jacobi	Bruce Leach	Allan McKisson	Clifton Ogea	Mark Romatz	Sara Sokolnicki	Luanne Van Petten
Kenneth Alexander	Patricia Brauningner	David Costello	Vickie Essenmacher	Mia Halfman	Noelle Jacquez	Tiffany Lee	Julia McNamara	Becky Ogilvie	Dempsii Rosales	Robert Sokolnicki	William Van Petten
Patricia Alexander	Laura Breibart	Diane Costello	Peggy Falk	Gwen Hall	Roseanne Jamrok	Carol Man Lee	Mairead McNameeKing	Shannon Olsen	Daniel Rosales	Barbara Solomonson	Camille Vettraino
Jack Alexander	Randy Elizabeth	Virginia Cowan	Emily Fasan	Tracy Hankins	Alan Janulis	Heather Lee	Robert McQuilkin	Shannon Orme	Janice Ross	Rebecca Somsel	Makayla Vitous
Catherine Alter	Brenner-Leifer	Meggie Cramer	Roger Favorite	Helen Hankins	Nancy Janulis	Elizabeth LePoidevin	Judith McQuilkin	Carol Oseroff	Leland Rossi	Steven Somsel	Alexandra Voigt
Helen Altman	Michael Bresler	Linnie Cross	James Feahr	Cynthia Hann	Marilyn Jensen	Steven Lett	Michael McWilliams	Stanley Otto	Bradley Roswell	Juliet Sorensen	Alvin Waddles
Fred Altman	Devon Briggs	Beth Crutcher	Karen Feahr	Lindsay Hanson	Betty Jewell	Diana Lett	Paul Meernik	Morrie Ozinga	Shirley Royston	Richard Sosnowski	Janet Walker
Julie Alton	Derek Brockington	Sharon Czapiewski	Elizabeth Fedewa	Bob Hardley	Alwyn Johnson	Mark Leugers	Mary Terese Meernik	Gary Paige	Cynthia Russell	Diana Sosnowski	Marcia Walters
Jan Anasis	Peter Brodhead	Anna Czarniecki	Taylor Fernandez	Paula Hartmann	Wendy Johnson	Shelby Lewis	Herbert Mendelsohn	Riley Palmer	Patrick Rutkowski	Roger Soule	Paul Walters
Jone Antenucci	James Brower	Barbara Czarniecki	Daniel Fields	Elizabeth Hartung-Ciccolini	Jay Johnson	Mary Limer	Michael Meredith	Jeana Paquet	Michael Rutkowski	Gretchen Soutear	Robert Warner
Adam Arango	Carol Brouwer	James Dagwell	Carol Brouwer	John Hays	Kristal Long	Mary Long	Donna Merriman	Dawn Patch	Suzanne Rutkowski	Jonah Speidel	Mary Warner
Michael Arden	Katharine Brown	Laura Dagwell	Michael Arden	Cynthia Hecht	Donald Lord	Donald Lord	David Meyer	Linda Patrick	Kathy Sabel	Anne Stanton	Juanita Watson
Danielle Arens	Kecia Brown	Conor Dailey	Danielle Arens	Jocelyn Heksem	Wanda Lord	Julie Ann Lowery-Min	Sally Meyer	Tia Patterson	Alessandra Salazar	Wendey Stanzler	Noel Watson
Gregg Arst	James Brown	Beth Dassa	Gregg Arst	Glenda Finner	Julie Ann Lowery-Min	Vashti Lozier	Connie Meyers	Rebecca Pattinson	Elizabeth Sayre-King	Stephen Starks	Starr Wayne
Roy Aydelotte	Cydney Brzeski	Ellen Heksem	Roy Aydelotte	Ellen Fivenson	Aidan Luce	Aidan Luce	Dennis Meyers	Maryellen Paull	Kathryn Schlomer	Susan Steele	Ellen Weatherbee
June Aydelotte	Juliane Buntin	Erika Floreska	June Aydelotte	Erika Floreska	Doug Luce	Doug Luce	Mary Miller	Penny Payne	Mary Schoonover	Elfie Steigerwald	Gayla Weaver
Richard Bader	Leslie Burgstahler	George Foster	Richard Bader	George Foster	John Luce	John Luce	Kathleen Miller	Ivelisse Perez	Kerry Schubach	Catherine Stephenson	Benjamin Weinberg
Carol Bader	Anna Burgstede	Suzanne Franko	Carol Bader	Suzanne Franko	Sydney Lusby	Sydney Lusby	Larry Miller	Carol Peschke	Roger Schultz	Kathleen Stetson	Yonatan Weiss
Gary Baillod	Timothy Burke	Robert Franko	Gary Baillod	Robert Franko	Madison Lusby	Madison Lusby	Vickilee Miller	Sarah Pfeil	Jane Schultz	Megan St Germain	Jennifer Weizer
Janet Baillod	Cynthia Burns	Laura Fried	Janet Baillod	Laura Fried	Richard Luther	Richard Luther	David Min	Steven Pfeil	Michelle Schultz	Jill Stoll	Susan Wentz
Ruth Bank	Robert Buryta	Stephen Fry	Ruth Bank	Stephen Fry	Kathleen Kasdorf	Kathleen Kasdorf	Al Minicucci	Rebecca Phelps	Nicholas Schwartz	Mei Stone	Carla Wheeler
G. Bard	John Deverman	Mary Frye	G. Bard	Mary Frye	Loree Katahara	Loree Katahara	Dianne Minicucci	Molly Piech	Tracy Schwimmer	Casey Stratton	Millie Whitbeck
Clark Barnes	Nancy Bush	Stacey Funk	Clark Barnes	Stacey Funk	Laura Kaufmann	Laura Kaufmann	Jennifer Mitchell	Julia Pilent	Lisa Scott	Janet Stroup	Leigh Wietsma
Ella Barr	Mary Butcher	Jennifer Garcia-Hettinger	Ella Barr	Jennifer Garcia-Hettinger	Melvin Keranen	Melvin Keranen	Theresa Mohr	Josephine Pittman	Sandra Seidelman	Betty Strunk	David Wilcox
Katherine Baxter	Michael Caraher	Adrienne Hirsch	Katherine Baxter	Adrienne Hirsch	Karen Keranen	Karen Keranen	Patrick Monahan	Gwenn Pittman	Michael Seidelman	Mark Stuber	Kathryn Wilcox
David Beach	Amy Carl	Pat Hirst	David Beach	Pat Hirst	Jeff Kessler	Jeff Kessler	Linda Monahan	Molly Pont-Brown	Jaclyn Seligman	Joan Studzinski	Joan Williams
Helen Becker	Jan Carter	Teresa Hittner	Helen Becker	Teresa Hittner	Christine Kiely	Christine Kiely	Constance Mann	Ronald Popp	Pamela Shaberly	Elizabeth Stuk	Bonnie Willings
Carole Becker	Lois Castle	Joshua Hodge	Carole Becker	Joshua Hodge	Patrick Kiely	Patrick Kiely	Jean Marie	Shirl Popp	JoAnn Shemwell	Anne Stull	Joanne Willis
Dennis Becker	Jerry Cavaliere	Skye Gentle	Dennis Becker	Skye Gentle	Charles Kinzel	Charles Kinzel	Sparling Mark	Paola Prestini	Kathy Shimunek	Greg Surma	Darlene Willman
Ron Becker	Helena Cavaliere	Francis Geuss	Ron Becker	Francis Geuss	Julia Kirchhausen	Julia Kirchhausen	Barbara Marsh	William Price	William Short	Mary Jo Surma	Margaret Wilson
Jane Becker	Mark Cerny	James Hoffman	Jane Becker	James Hoffman	Linda Kish	Linda Kish	Karl Marsh	Carolyn Priest	Joseph Singer	Colleen Sweeney	Mary Wohlfert
Theodore Beiderwieden	Christopher Chaffee	Herbert Holdwick	Theodore Beiderwieden	Herbert Holdwick	Jennifer Klein	Jennifer Klein	Sandra Martis	Dale Priest	Rita Singer	Rachel Swon	Peter Wolcott
Ethan Bensdorf	Jeannine Chapman	Jean Holdwick	Ethan Bensdorf	Jean Holdwick	Jack Kline	Jack Kline	Elizabeth Marvel	Kasey Muhammad	Leah Serrine	Carl Tacke	Chun Sum Wong
Alan Benson	Lauren Chapman	Steve Horne	Alan Benson	Steve Horne	Colin Knapp	Colin Knapp	Lesley Matheson	Malcolm Muhammad	Marilyn Skold	Patricia Tallman	Linda Wood
Tom Berg	Stephen Chapman	Pamela Horne	Tom Berg	Pamela Horne	Charlotte Knoll	Charlotte Knoll	Cyril Mauro	JoAnne Munley	Ann Skory	David Tanis	Ted Wood
Gordon Berg	Samantha Charnes	Shelley Houser	Gordon Berg	Shelley Houser	Gerald Koch	Gerald Koch	David Maxson	Mark Munley	Eli Reisz	Sharlene Thomas	Vanessa Workman
Tanya Berg	Christine Chi	Katherine Houston	Tanya Berg	Katherine Houston	Bonnie Koch	Bonnie Koch	Julie Maxson	Patricia Munsell	Julie Reisz	Bob Thompson	Alyssa Wyklige
Elizabeth Berger	Michelle Chui	Jonathan Hughes	Elizabeth Berger	Jonathan Hughes	Andrea Koch	Andrea Koch	Mark Mayfield	Vince Muzzi	Jennifer Richards	Jeanette Thompson	Christina Xing
Katherine Beyda	Todd Church	Kristine Huskey	Katherine Beyda	Kristine Huskey	Linda Koebert	Linda Koebert	Sheila McClure	Susan Napolitano	Kathleen Richter	Patricia Thompson	Lauren Yuzon
Beth Bigler	Lou Ann Churchill	Robert Ichord	Beth Bigler	Robert Ichord	Andrew Koran	Andrew Koran	Jan McCormick	Laura Nell	Patrick Richter	Don Thomson	Elden Zang
Richard Bingham	Todd Cochran	Susan Gugel	Richard Bingham	Susan Gugel	Kathy Kormmiller	Kathy Kormmiller	Kathy McCurdy	Michael Nelson	Noah Ricketts	Michael Thurber	Carole Zang
Amy Birtcher	Cara Colburn	Daniel Gurevich	Amy Birtcher	Daniel Gurevich	Laverne Kowalski	Laverne Kowalski	Tracey McDaniel	Brittany Nicol	Dennis Ring	Irma Tooley	Kathy Ziege
Robert Boehm	Karen Connick	Virginia Haag	Robert Boehm	Virginia Haag	Jennifer Kuhn	Jennifer Kuhn	Gary McDaniel	Kaycie Noble	Karen Ring	Mark Tosiello	Jenna Zucker
Nancy Boehm	Stephen Constantin	Chuck Haag	Nancy Boehm	Chuck Haag	Karen Lake	Karen Lake	James McDermott	Karen O'Brien-DeBaakey	Anita Risbridger	Vicki Trent	Susan Zweig
Stuart Bogie	Katherine Cooke	Marlene Habermann	Stuart Bogie	Marlene Habermann	David Lake	David Lake	Sharon McDermott	Patricia O'Hara	Joanne Robb	Lynn Troutman	Helena Zweig
Bessie Bone	Barbara Cooper	Rebecca Haddad	Bessie Bone	Rebecca Haddad	Eunice Lampkin	Eunice Lampkin	Matthew McGaughey	Pam O'Hara	Richard Robinson	Terry Smith	Ellen Troyer
Elizabeth Boomer	Jack Cooper	Antoinette Haddock	Elizabeth Boomer	Antoinette Haddock	Stefanie Lange	Stefanie Lange	Lisa McGeoch	Patrick O'Hara	Ernest Robles	Anna Smith	Isabelle Tuncer
	Anne Cooper	Carol Haddon		Carol Haddon	Peter LaPlaca	Peter LaPlaca	Anthony McGill	Alexandra Oehmke	Anne Rogers	Ann Snyder	Richard Valice



**The Cycle of Disposition —**

Ceramic, cotton, and hair

Angelica Bohanan (IAA 15-19, IAC St 19) is from Broken Bow, Oklahoma, and attended Interlochen Arts Academy for four years. Angelica received the Finalist status in the 2019 YoungArts competition. She creates artwork in a variety of media while integrating her culture with traditional techniques which include ceramics and basket weaving. The imagery in her work is procured from her journals and centers around her innermost demons, community, and family. The artwork gives insight to a personal narrative that is also very political and relatable.

**THANK YOU for  
amazing moments**



**A sincere thank you to all of our supporters.**

Thank you for helping students explore, grow, and flourish. You brought smiles to young artists, inspiring performances to the stage, thoughtful public radio programming to the airwaves, and joy to the hearts of audiences—on campus and around the globe.

Thank you to the following leadership supporters who contributed \$1,000 or more in calendar year 2018. We are also grateful for our anonymous supporters. Each and every gift is valued!

We sincerely appreciate the opportunity to correct any errors or omissions, or to make changes to your name listing. Please contact the Advancement Office at 231.276.7623 or [advancement@interlochen.org](mailto:advancement@interlochen.org).

**GIVING CLUBS**

Interlochen is pleased to honor its most generous supporters at the following recognition levels:

**President's Club** \$5,000 and above

- Diamond Members (\$100,000 and above)
- Platinum Members (\$50,000 - \$99,999)
- Gold Members (\$25,000 - \$49,999)
- Silver Members (\$10,000 - \$24,999)

**W. Clement Stone Society** \$1,000 - \$4,999

- Gold Members (\$2,500 - \$4,999)
- Silver Members (\$1,000 - \$2,499)

**IPR Recognition**

- IPR Producer's Circle (\$5,000 and above)
- IPR Broadcaster's Circle (\$1,000 - \$4,999)

PRESIDENT'S CLUB

DIAMOND MEMBERS

(\$100,000 and above)

- Anita C. Dean Estate\*
- Mr. Thomas H. Corson◊
- Mr. and Mrs. Casey Cowell◊
- Carolyn and Richard Chormann◊
- Mrs. Joan L. Cutting\*◊
- Mohamed El-Erian
- Daniel Hamann
- Cindy and Jon Hann\*◊
- Judith Harris and Tony Woolfson\*
- Mr. Stephen E. Hayden\*◊
- Ms. Nancy Hoagland\*◊
- Ian and Karen Latchford◊
- Daniel R. Lewis
- John and Margaret Manuel\*◊
- Drs. William B. and Yvonne C. Martin◊
- Mr. and Mrs. Phillip J. Meek◊
- Rev. Dr. Linda Patrick and Rebecca Phelps\*
- Tom Quinn and Tommy Thompson◊
- Claire and Jim Skinner\*
- Jane and Larry Solomon
- Glynn Williams and Charlene Moore◊

PLATINUM MEMBERS

(\$50,000 - \$99,999)

- Chuck Andrews
- Mr. Gordon F. Brunner◊
- LeRoy T. Carlson, Jr. and Catherine C. Moully◊
- Mrs. Pamela G. Dow Collie◊
- Hank Dow\*◊
- Mr. David Eli Harris\*◊
- Dr. Paul H. Jordan, Jr.◊
- Susan Kettering
- Mr. and Mrs. Stuart Kline◊
- Jerry and Terri Kohl
- J.J. Leeds and Taylor Mitchell\*◊
- PJ and Sheri Moysset

- David and Rebecca Schamis\*◊
- Mr. Gregory C. Schuler◊
- Sumit Sengupta and Cassie Brooks\*◊
- Charles and Kerry Tyler
- Ms. Shirley Young◊

GOLD MEMBERS

(\$25,000 - \$49,999)

- Fred and Helen Richter Altman
- Edward R. (Ted) Bagley◊ °
- Ms. Sheila Baker◊
- Richard and Virginia Case◊
- Mr. and Mrs. Don V. Cogman◊
- Ms. Deborah J. Cohen\*◊
- Sandra & Gary Drew\*◊
- Mrs. Phyllis Foster
- Paul and Wendy Greeney
- J. William and Judy G. Ichord\*
- Christopher and Elizabeth Kojima
- Fred and Ginny Krauss◊
- Community Foundation, Wilfred and Joan Larson Endowment◊
- Craig and Shari Morgan\*◊
- Mr. Thomas W. Morris\*◊
- Ron Munson\*◊
- Bill and Linda Nelson◊
- The Family of Clara R. Noyes◊
- Becky Ruthven
- Dr. Craig D. Silvertown◊
- Mr. Richard M. Smith and Ms. Soon-Young Yoon◊
- Mike and Sara Whiting\*

SILVER MEMBERS

(\$10,000 - \$24,999)

- Ms. Laura J. Andersen\*◊
- Greg and Laurie Anderson◊
- Mr. and Mrs. Keith W. Baum\*◊
- Drs. Neil and Susan Bressler\*◊
- Ms. Elaine Amacker Bridges◊
- Mr. Richard Goisman and Mrs. Jo Ann Brindis Goisman\*
- Gloria and Leith Butler◊
- Mr. Robert Carone
- Mr. and Mrs. James Chiarelli\*
- Cathy Compton and Dan Butts\*◊
- Andrew Cordonnier\*◊
- Kristen Courtney\*◊
- Ms. Joanne Danto\*◊
- Mr. and Mrs. Carl M. DeFaria\*◊
- Vincent DiMartino and Patti Powell\*◊
- T.J. and Hilda Wood Fund of The Greater Cincinnati Foundation
- Mr. Barrett Foa\*◊
- Mr. Charles H. Fultz◊ °
- C. Joanne Grabinski\*◊
- Alexander Jones and Catherine Haines
- Byron Hanson\*◊
- Sarah Harding and Mark Ouweleen◊
- Mrs. Ethel Harris◊
- Lisa Hofer and Brian Silver\*◊
- Mrs. Gayle Shaw Hutton\*
- T. Michael and Joan L. Jackson◊
- Mr. Timothy M. Jackson\*◊
- Ms. Laura Fisher Johnson\*◊
- Neale and Rowena Jones
- Kaiser Sandler Family\*◊
- Ms. Eleanor B. Keb◊
- Daniel and Cynthia Kelley\*◊
- Dr. Charles and Dolores Kelly\*◊
- Mr. and Mrs. D. Michael Kratchman
- Jonathan Ledden and Krista Swenson Ledden\*◊

- Ann and Roger Looyenga
- Honnie and Dick McCleary◊
- Judith and Marshall Meyer\*
- The Min Family\*◊
- Drs. Nicholas and Elaine Mischler◊
- Richard and Mary Pisarczyk◊
- Linda and Max Proffitt
- Mr. and Mrs. Ronald J. Rich
- Matthew and Jennifer Rowland
- Larry and Izzy Francis Smith\*◊
- Mr. and Mrs. Tad Monnett Smith\*◊
- Peter and Sue Stern
- Dr. Sallie Streib\*
- Ms. Sarah L. Titus\*◊
- Candace Wiebener\*◊
- Bruce Richard and Beth Stoner Wiegand\*◊

PRESIDENT'S CLUB continued

(\$5,000 - \$9,999)

- Bill and Barb Alldredge◊
- Mr. Dean W. Anderson and Ms. Elaine Gurian\*◊
- Robert W. Anderson\*◊
- Mr. Bruce Asher◊
- Don Russell Baker, D.M.A.\*◊
- Steven and Kathryn Bandstra◊
- Mr. Clark W. Barnes\*◊
- Charles W. Barr II◊
- Marshall and Margaret Bartlett\*◊
- Sterling and Anne Berry◊
- Paul Biederman
- Richard and Susan Bingham◊
- Richard Bogomolny and Patricia Kozerefski\*
- Ms. Ann Marie Hudson Brink\*◊
- Susan E. Brown\*
- Steve and Jeannine Chapman\*◊
- Robert and Lucinda Clement\*◊
- Camille Colatosti\*
- Bruce Corner and Gaye Gronlund\*◊
- Anneliese Festersen Crawford and Bob Crawford\*◊
- Amy and Trey Devey\*

- Clark Miller and Cathleen Dodge Miller\*
- Mr. and Mrs. Daniel C. Edson◊
- Mrs. Isabel Fisk◊
- Frank and Tiffany Foster
- Susanne Geier
- Drs. Guy and Andrea Golembiewski◊
- David and Charlotte Gray◊
- Judson and Joyce Green◊
- Judith Groleau◊
- Lowell and Mary Gruman◊
- Bessie I. Hamm◊
- Dr. and Mrs. Timothy Hanley◊
- Mr. John Martin Hein\*◊
- Kathryn Hess
- Jack and Martha Hicks\*◊
- Heidi Holman
- Dr. and Mrs. David A. Horwitz\*◊
- Hollye and Jeffrey Jacobs
- Greg and Betsy Jacobson\*◊
- Donald and Murside Jean\*
- Mr. Jerold Seth Kayden\*◊
- James and Polly Jo Kemler◊
- Pat and Barb Kessel\*◊
- Jean S. Kettering
- Mr. Jim Krause◊

- Paul and Judy Lerwick
- Dr. and Mrs. Richard H. Lineback◊
- Mr. Richard Lunquist\*
- Mr. and Mrs. Mark P. Mayfield\*◊
- Mr. and Mrs. John McNaughton\*
- H. Roemer and Constance McPhee
- John G. and Mary E. Melvin◊
- Andrew R. and Janet F. Miller
- Mr. Steven Morgan
- Robert and Penny Parmelee
- Susan and John Paul\*◊
- John H. Peterson and Randy Lowe Holgate\*◊
- Mr. and Mrs. David C. Petrick◊
- Jonathan and Margo Redfern
- Julie and Frederick Reisz
- Willard and Sharon Reisz
- Mr. and Mrs. David Scott Rhind\*◊
- Drs. Barrett Rollins and Lynn White\*
- Mrs. Luella Rorick◊
- Ms. Judy Dow Towsley Rumelhart and Donald Rumelhart\*◊
- Tracy and Marc Schwimmer◊
- Dr. Stephen Shetron◊
- Carolyn and Jonathon Singer

- Michelle Slater and Dmitri Sinenko\*◊
- Cynthia Smith-Jans
- Julie Smith
- Linda VanSickle Smith, HS 57-60\*◊
- Ms. Joanne L. Sprouse◊
- Mr. Arthur R. Stickles◊
- Dr. James F. Stoddard◊
- Jeanne and Edward Stroetz
- Mrs. Kathleen Sun
- Bob and Beth Tarkington\*
- Mrs. Jeanne Townsend◊ °
- Jerry and Marcy Tubergen◊
- Mr. and Mrs. Stephen E. Upton◊
- George and Lauri Varga◊
- Mr. and Mrs. Patrick Wicksall◊
- Diane Holcomb Wilshere and Kevin Wilshere\*◊
- Robert and Pauline Young◊
- Dr. C. Winton Reynolds III and Ms. Lauren Zachry-Reynolds\*
- Bill Zheng and Jun Wang\*◊
- Linda and Joel Zylstra

\* Interlochen alumni or staff ◊ Ten consistent years of giving ° Deceased



## W. CLEMENT STONE SOCIETY

## GOLD MEMBERS

(\$2,500 - \$4,999)

Morton and Barbara Achter  
Wilbur and Janette Albrecht  
Janet Alpert  
Dr. and Mrs. Peter Rosner Bankoff  
Mrs. Ned K. Barthelmas  
Ron and Jane Becker  
The Beia Family  
Ms. Mary Frey Bennett  
Dan and Jennifer Bonifacio  
Douglas Brown CFP  
Mr. and Mrs. Ralph J. Cerny  
Nancy and Martin Chalifour  
Ms. Michelle Chapman  
Phil and Barb Chapman  
Mrs. Nicola Conraths-Lange  
Stephen and Sheri Constantin  
Berkley and Nancy Duck  
Ms. Dede Duson  
Mr. David Weil Ellis  
Mr. and Mrs. James Evola  
Dr. Robert Fall  
Mr. and Mrs. Robert Fehrmann  
Kenneth and Penelope Fischer  
Mary Gerritsen and Alfred Hoffman  
Mr. and Mrs. Edward H. Graft  
Dietrich and Erika Gross  
Mrs. Coggin A. Heeringa  
Harry and Marsha Heinkele  
Karla Herbold  
Walter D. Herrick  
Page and Dan Houser  
Michael and Marsha Howard  
Martha S. Jacobi and James Carter Cathcart  
Chuck and Laurie Jarrett  
Glenn Jessee and Ronald Benschoter  
Ms. Liz Johnson  
Marana Webber Tost Charitable Fund  
David Kam and Kristi Hameedi

Mr. and Mrs. J. Christopher Kantgias  
Mr. Dean P. Kasperzak  
Mrs. George R. Kempton  
Mr. David M. Kilian  
Jeffrey and Julie Kimpton  
Mr. and Mrs. Richard F. Larkin  
Mr. and Mrs. Gregg Alan Latterman  
Hazel Lawrence  
Dr. Kate Levin  
John and Gloria Lyon  
Mr. Donald G. MacDougall  
Mr. and Mrs. Michael J. Madigan  
Mr. Tom Maiolani  
Dr. Angela McBride  
Ms. Patricia Kaiser McCloud  
John McGarry and Michelle Wernli  
Mr. Jack Allen McKimmy  
Mr. and Mrs. Kimball Morris  
Tammy and Stuart Nam  
Mr. and Mrs. Walter R. Nelson  
Bruce and Becky Ogilvie  
Patty Pelizzari  
Bob and Martha Pierce  
Mrs. Marcia Rose  
David and Amy Samuels  
Don and Cathy Schepers  
Mr. and Mrs. Karl B. Schlabach  
Todd and Betiana Simon  
Ron and Mary Lynn Sondee  
Drs. Alfred Spector and Rhonda Kost  
Cathy Stephenson  
Charles and Linda Svec  
Adam and Elizabeth Szykiel  
Carol and Dick Thompson  
Mr. John Touhey  
Richard and Anne Tryon  
Ms. Claudia Diane Tull  
Mr. and Mrs. Leo Voglrieder  
John and Kim Wagner  
Andrew Walters

Mr. and Mrs. Raymond A. Weigel III  
Ms. Cynthia Marie Whitacre  
Rex and Nan Winter  
Joan and Randy Woods

## SILVER MEMBERS

(\$1,000 - \$2,499)

Porter and Anita Abbott  
Robin Aboosamra and Gregory Thomas  
Mrs. Dixie Behr Addington\*  
Ms. Duffie A. Adelson\*  
David and Jeneen Hollenberg Almdale\*  
Dr. Jay D. Ambrosini\*  
Mrs. Jacquelyn Amenson  
Ms. Bobbi Ames  
Seth Ammerman, MD\*  
Bill and Vicki Anderson  
Mrs. Kristy Andrews  
Jon S. and Mary E. Armstrong  
Calvin Baker and Lidia Paz-Baker  
Mr. Mark J. Baleja  
Mr. David Barger  
Barbara Bates-Lalick  
Mr. and Mrs. William G. Batt  
Betty R. Baugh  
Ms. Jeanne Elizabeth Baxtresser\*  
Ginny and Scott Beall  
Matthew and Anne Bean  
Kristy and Douglas Becker  
Richard and Lorraine Beers  
Reverend Theodore W. Beiderwieden III  
Elaine I. Bell  
Mr. Lawrence Bell  
Mrs. Ruth Bell  
Phyllis Gold Berenson\*  
Liz and Jon Bernreuter\*  
James and Madge Berryhill  
Ken and Judy Betz  
Ueli and Janice Binkert\*  
Drs. Marshall and Laurie Blondy\*  
Mr. Jerry Bloom  
Tim and Dana Boals  
Ms. Susan E. Bomier\*  
Mr. David Bondurant\*  
Warren and Beverly Boos  
Richard and Barbara Bowzer  
Mrs. Emily R. Boyd\*  
Gerald and Gloria Boyd  
Kenneth C. and Carol A. Boyd  
Judy and Kevin Boyle  
Michael and Adrienne Bresler\*  
Norton and Mary Lee Bretz  
Mr. and Mrs. C. Andrew Brickman  
Ralph and Lorraine Brickman  
Dr. Roberta Brokaw  
Sharon Brown-Sweeney and Patrick Sweeney\*  
Mr. Dwight Landon Brown\*  
Dr. Leslie Ellen Brown\*  
Trish and Rick Bryan  
Mrs. Margaret Bunn  
W. Clark and Karen Bunting  
Kenneth J. Burger  
Jim Burlin  
Frank and Sharon Bustamante  
Mr. and Mrs. Brian Chandler Campbell\*  
Mr. Tom L. Capua  
Mr. and Mrs. Don Carlson  
Neil and Mary Carter  
Rachel and Samuel Catanese  
Ms. Ann Chinn  
Troy Clair  
Don and Marylou Coe  
Dr. and Mrs. Michael Peter Collins  
Gilbert Collver  
Christopher Abissi and Gail Comer  
Ms. Jane R. Comings  
Howard and Mary Cook  
Mr. Daniel P. Corrigan  
Steve Cousins and Terry Donahue Cousins

## W. CLEMENT STONE SOCIETY continued

Hal Flynn and Jean Craig Flynn\*  
Charles and Carol Creasser  
Mr. Harry Cribbs  
Kevin Crowell and Janet Leong\*  
Ted and Marcia Curran  
Ruth and Anthony D'Eredita  
Mrs. Gale Rainsford D'Luhly\*  
Todd Dalley  
Mark and Nan Dancer  
Ethan and Gretchen Davidson  
K. Meg Davis  
Stephen Carr and Jill Davis  
Dr. and Mrs. Mick DeGraeve  
Mrs. Carol Richardson Dennis\*  
Ms. Chris Denno  
Mr. and Mrs. George W. Diehl\*  
Ms. Lorraine Dillon  
Dr. Susan Donner  
Mrs. Nancy L. Dotlo\*  
Mr. and Mrs. James W. Dutton  
Mr. and Mrs. J. Christopher Eagan  
Douglas R. Eicher\*  
Richard Eisenberg\*  
William and Martha Encherman  
Lily Esposito\*  
Michael and Rhonda Estes  
Mr. and Mrs. William Ewing  
Melissa and Timothy Ewing  
Paul and Mary Sue Ewing\*  
JoAnn Falletta and Robert Alemany  
Marjorie and Walter Farrell\*  
Caryl Ferguson\*  
Mr. John Emmanuel Fernandez\*  
Allan E. and Kim H. File\*  
Ms. Susan Jane Finke  
Ms. Audrey Fisch  
Catherine L. Fischer\*  
Mr. James Fisher\*  
Mr. and Mrs. Jeffrey E. Fisher  
Mr. and Mrs. David L. Fleisher  
Anthony and Frances Fortuna

Joyce and Thomas Freiwald\*  
Yuko and Jay Frost\*  
Carl and Rondi Fry  
Carl and Eileen Ganter\*  
Martha Garber  
Jan Garfinkle and Mike O'Donnell  
Mr. and Mrs. David C. Garlock\*  
Ana Gasteyer and Charles McKittrick\*  
Mark Gibson and Kirstin Greenlaw\*  
Jeff Gilbert  
Bob and Nancy Giles  
Mr. Mark Girardin  
William R. Golden Family  
Lois Goldstein and John Heiam  
Mr. Michael Good\*  
Mrs. Barbara Goodearl  
David and Penelope Gordon  
Roberta Gordon\*  
Mrs. Crystal Gregg\*  
Wayne and Mary Gregoire  
Mr. Jerrold Gretzinger and Ms. Meg Staley  
Linda Griggs\*  
Eric and Elizabeth Gutt  
Frank and Connie Hagelshaw  
Dr. Erik J. Hanby and Dr. Dina Khoury Hanby\*  
Dan and Pam Hann\*  
Craig Hanson  
Dr. Mary Beth Hardwicke  
Mr. and Mrs. Dale Arthur Harmelink\*  
John and Judy Harnish  
Ms. Mary M. Harrison  
Roberta Hawkins\*  
Irwin Family Fund, a Donor Advised Fund of Renaissance Charitable Foundation  
Mr. Bruce Hayner  
Mr. and Mrs. John Charles Hecker\*  
Nancy M. Hedges  
Donald Heian Fund\*  
Mr. Allan Heinberg\*

Barbara Heller\*  
J. Stephen and Lisa L. Henderson\*  
Mark Hepler  
Matt and Sara Hieber  
John G. Hildebrand\*  
Mr. Alexander McMillan Hirshfeld\*  
John and Shirley Hoagland  
David R. Hoffman\*  
David and Joan Holland\*  
David and Deborah Holloway  
Gary Holt\*  
Wally and Marie Hooper  
Pam and Steve Horne  
Barbara and Donald Hosmer\*  
Mike and Jane Houlihan  
Jason Hubbard\*  
Jim and Diana Huckle  
Ms. Marcia Hughes°  
Al and Julie Hurd  
Mr. and Mrs. Bart Ingraham\*  
David and Ann Irish  
Brian and Jennifer Jaffe\*  
John J. and Margaret M. Jaqua  
Judy Jashinsky  
Dorothy A. Johnson  
Mr. and Mrs. Timothy Johnson  
Mr. Lawrence E. Jones  
Mr. Thomas C. Jones  
Mr. Thomas O'Paty Jones\*  
V. Stewart and Connie Jose\*  
Ms. Lauren Newberry Joy\*  
Connie and Gregory Kach  
Dr. and Mrs. Edward Kalat\*  
Terry Eder Kaufman and Gene Kaufman\*  
Laura Kaufmann and Gregg Arst\*  
Mrs. Linda Kehr  
Ms. Jan Reinhart Kelley\*  
Kevin and Trine Kelly  
Mr. James Henry Kennedy V\*  
Stephen and Ethel Kikoler\*  
Mr. Alan Kirby

Ms. Kathleen Kirkpatrick\*  
Martha and Christopher Kitchen\*  
Douglas B. Klauwe  
Lester and Becky Knight  
Matt and Deborah Knudstrup  
Anna Paulina Foundation  
Wilmar A. and Karen L. Kohne\*  
Mrs. Adrienne Kole Nassau\*  
Tim Kool  
Caroline Straty Kraft and Noah Kraft\*  
Ms. Ann Kullenberg\*  
Jim and Kris Kunz  
Ginger Speigel Lane\*  
Meg Lau  
Laura and Kevin Lavrack  
Mr. and Mrs. Timothy Leahy  
Mrs. Elizabeth Lucy Leden\*  
Dr. and Mrs. Andrew Lee\*  
Dr. David Lai Lee\*  
David and Patricia Leege  
Ruth L. Leonard  
Mark and Juliana Leslie  
Kristi and Sherman Lewis\*  
Richard and Sally Lewis\*  
David and Jan Libengood\*  
Dr. Susan Harrison Lingle\*  
Ms. Dency A. Lippert\*  
Mr. Robert R. Little  
Scott and Vickie Lizenby  
Dr. and Mrs. Michael London  
Bruce and Julie Lowing  
Drs. Peter Lucas and Linda McAllister  
Marilyn Lufkin  
David and Carol Luhman  
Greg and Stephanie Luyt  
Dr. and Mrs. Carl G. Madion  
Ms. Kara Madion  
Mr. and Mrs. Ralph James Mandarano\*  
Ms. Sara Anne Mankins\*  
Karl and Barbara Marsh\*  
Mary Marshall

W. CLEMENT STONE SOCIETY *continued*

Mr. John Ruder Mason\*  
 Mr. and Mrs. John W. Matz, Jr.  
 Beth and Vance Maultsby  
 Lawrence Mawby and Lois Bahle  
 Joseph and Terri McCarthy\*  
 Ms. Meredith Parsons McComb\*  
 John and Pamela McDonald  
 Patty and Mark McGrath  
 Mrs. Nancy McGuire  
 Mr. James A. McIntyre  
 Mrs. Patricia A. McMahan-Eichenlaub\*  
 Ann McPhail  
 Ms. Rachael Ariella Mellado\*  
 Ms. Susan E. Michener  
 Stephen B. Milbauer\*  
 Mr. and Mrs. Eugene Miller III  
 Dr. and Mrs. G. Robert Miller  
 Patrick Miller  
 Ray and Maryellen Miller  
 The William G. Miller III Family  
 Jay and Jennifer Mills\*  
 Bud and Joyce Mims  
 Mr. James R. Modrall III  
 Mrs. Loren Mansbach Moore\*  
 Ms. Julie Moran  
 Mrs. Carol Morley Beck  
 Cheryl Morley  
 Dr. and Mrs. Paul L. Morris\*  
 Mr. and Mrs. Richard A. Morris  
 Eric and Amy Jo Mueller  
 Bette and Benson Munger\*  
 Jeanne Murphy and John Mallon  
 Colm Murtagh and Niamh O'Donnell  
 Mr. Peter Stephen Myles\*  
 Mr. and Mrs. R. Nawrocki  
 Bill and Carolyn Neale  
 Sharon and David Neff\*  
 Bonnie Nescot and Tim Barr  
 Sabrina Newton  
 Chris Noga

Dr. and Mrs. William Northway  
 Mr. Richard D. Oliver  
 Martha Orloff  
 Ms. Virginia Libby Osborne\*  
 Dr. Carol Ebert Oseroff\*  
 Michael Ouzounian and Trish Rogers\*  
 Mark Pattis  
 Mrs. Jacque Larimer Pavlosky\*  
 Peter and Sarah Payette\*  
 Mr. Karl Pearson  
 Rodolfo and Margaret Perez  
 Ms. Mary Peters  
 Lena Plamondon and John Matheny  
 Dr. Angela Pohl  
 Mrs. Julia Poole\*  
 Mrs. June Prein  
 Mr. William Premo and Ms. Pam Prairie  
 Carolyn Felix Purcell\*  
 George and Carol Quarderer  
 David Wright and Julie Quinn  
 Mr. and Mrs. James J. Radabaugh  
 Ken Bloem and Royce Ragland\*  
 Mr. Monroe Rathbone\*  
 Ms. Polly Rea  
 Thomas and Amy Rea  
 Mr. Daniel F. Remahl  
 June Rengo  
 Mr. Luis E. Resto\*  
 Mr. and Mrs. Kent G. Richardson  
 Patricia Richardson  
 Ms. Yasmin Richmond  
 Mr. Jeremy Michael Robb\*  
 Mr. and Mrs. Robert Rodgers\*  
 Dr. Gerald Rogan\*  
 Mr. and Mrs. Thomas Rose\*  
 Paul and Peggy Rowley\*  
 Mr. and Mrs. Glenn E. Royer  
 Michael Ruch  
 Jim and Julie Runstrom  
 Amiel and Ayala Samuels\*

Vic and Bobbi Samuels  
 Ms. Ann Santen  
 Dr. Dan Sarya  
 Ross and Kerry Satterwhite  
 Dr. Bill Scharf  
 Lisa and Thomas Schermerhorn  
 Leslie and Walter Schmid  
 Matthew Schmidt and Kate Greene  
 Paul Schmuckal  
 Eric and Therese Schneider\*  
 Ms. Lois Schneider\*  
 Mr. Robert C. Scholten\*  
 Mr. Fred Schorr  
 Mr. Peter Fredrick Schuur\*  
 Steve and Joy Schwarting  
 Sally Schweikert  
 Mrs. Mary Ann Dore Scully\*  
 Pam and David Seabury  
 Nirmitee Shah and Arun Vadlamani  
 Michael and Sally Shaw  
 Na Shen and Yong Wang  
 Ms. Karla Sherman  
 Mr. John R. Shreves  
 Mr. Edward Sihler  
 Gene Sittenfeld\*  
 Mr. and Mrs. Robert A. Smart  
 Ms. Christine K. Smith\*  
 Mr. Henry Charles Smith\*  
 Van P. and Margaret A. Smith  
 Dr. Ann C. Snyder\*  
 Alana R. Spiwak and Sam L. Stolbun\*  
 Dr. Aaron C. Stander and  
 Ms. Mary K. Monteith\*  
 Mr. and Mrs. Donald Stearns  
 Tonia Steed and Victor Bondi  
 Mr. and Mrs. Christopher J. Steffen  
 Mr. and Mrs. William C. Stege  
 Dr. Marion Letvin Stein  
 Ross and Dianne Stephenson  
 Dennis and Sandra Stockemer

Mr. Nicholas Alan Stovall\*  
 Bruce and Jane Stowe  
 John and Nan Strickler  
 Stricof Family Foundation  
 Elizabeth and Jerry Suminski  
 Mr. Patrick Szymanski and  
 Ms. Margery Lieber  
 Dr. Gene D. Tang  
 R. Tannenbaum and E. Distelheim  
 Mrs. Hillary Taylor  
 Jerry R. Tejcek, DC  
 Mrs. Joyce Martin Thibodeaux\*  
 Herm and Laurie Thomas  
 Mr. and Mrs. John A. Thorne  
 John and Doris Toher  
 Mark Tosiello and Michelle Urso  
 Craig and Lori Towbin  
 Mr. and Mrs. Carl E. Tretter\*  
 John and Penny Tropman  
 Randy and Patty Tucker\*  
 David and Joanne Turner\*  
 Mr. and Mrs. Roger John Tuuk\*  
 Dr. and Mrs. Michael William Udow\*  
 Mrs. Gerhild Uhl  
 Gretchen Uhlinger\*  
 Durette M. Upton\*  
 Michael and Kim Upton\*  
 Aultra Ventures\*  
 Dr. Constance Van Valer\*  
 Ben and Donica Van Voorhees\*  
 Mr. Douglas VanZoeren and  
 Ms. Patricia Markovich\*  
 William and Jan VanDenburg  
 Stephen Vann\*  
 David Vendley  
 Mr. and Mrs. Timothy D. Vick\*  
 John P. and Lynn Vinkemulder  
 Ms. Suzanne Voltz  
 Dr. Petra von Kulajta and  
 Mr. Timothy Werner

W. CLEMENT STONE SOCIETY *continued*

Mr. Kenneth Wachtell\*  
 Ms. Christina Marie Wallace\*  
 Rick and Christine Walter\*  
 Ms. Marcia Ward\*  
 Rosemary and Thomas Waring  
 Polly D. Webb  
 Dr. Robert Terrell Webb\*  
 Mr. and Mrs. Kevin Weidenbaum  
 Elisabeth Morrow and Ben Weinberg\*  
 David Weiss and Lynn Epstein

Mr. Jason Michael Welch\*  
 Ms. Barbara L. Welther\*  
 Ms. Jennifer Lynn Wesling\*  
 Mr. and Mrs. Tim L. Westbay  
 Dr. Patricia Anne Wetzel\*  
 Ms. Anne Elizabeth Wharton\*  
 Carla Wheeler and Jeff Naimon  
 David White and Jeff Stricklin  
 Mrs. Evangeline White  
 The Honorable Kurtis T. Wilder

Tim and Kathleen Wiley  
 John Wilkinson and Robin  
 Silva-Wilkinson  
 Mrs. Mickey Wilkinson  
 Don and Ginny Williams  
 Jack Wixted  
 Janet Wolf  
 Drs. Douglas and Margo Woll  
 Mrs. Sally Wood  
 Dr. Thomas E. Wright\*

Mr. and Mrs. Ken Wyckoff  
 Mrs. Mary Yarbrough  
 Judith Yates  
 John and Pamela Yeager  
 John Yetter and Jeanne Dennis  
 Ms. M. Christine Young  
 Simone and Thomas Young  
 Mrs. Martha Zahn  
 Denton and Margaret Zubke

FOUNDATIONS, CORPORATIONS, AND ORGANIZATIONS

**Foundations, Corporations,  
 and Organizations  
 (\$100,000 and above)**  
 Allen Foundation  
 The R.B. Annis Educational Foundation  
 Ayco Charitable Foundation  
 Edmund F. and Virginia B. Ball  
 Foundation, Inc.  
 Canadian Friends of Interlochen  
 Chormann Family Foundation  
 Corporation for Public Broadcasting  
 Corson Family Foundation, Inc.  
 Allen B. Cutting Foundation  
 Fidelity Charitable Gift Fund  
 The Rollin M. Gerstacker Foundation  
 Global Village Charitable Trust  
 William Randolph Hearst Foundation  
 Herrick Foundation  
 Kettering Family Foundation  
 The Mallory Foundation  
 Michigan Council for Arts &  
 Cultural Affairs  
 Omaha Community Foundation Depository  
 Reliance Aerotech Inc.  
 Harry A. & Margaret D. Towsley  
 Foundation

**\$50,000 - \$99,999**  
 The Capital Group Charitable Foundation  
 Herbert H. and Barbara C. Dow  
 Foundation  
 Jerry & Terri Kohl Family Foundation  
 Miami International Festival Inc.  
 U.S. China Cultural Foundation  
 Matilda R. Wilson Fund  
 Wilsonart  
  
**\$25,000 - \$49,999**  
 Edith Blodgett Legacy Fund of  
 The Brookby Foundation  
 CASERVE Foundation  
 The Robert and Patricia Colby Foundation  
 DeRoy Testamentary Foundation  
 Goldman Sachs Philanthropy Fund  
 Grand Traverse Regional Community  
 Foundation  
 Jewish Federation of Cleveland  
 The Kline Family Foundation  
 Jenny H. Krauss and Otto F. Krauss  
 Charitable Foundation Trust  
 Mariel Foundation  
 Morgan Stanley Global Impact  
 The Pinkerton Foundation

Schwab Fund for Charitable Giving  
 Tolleson Wealth Management  
 Vanguard Charitable Endowment Program  
  
**\$10,000 - \$24,999**  
 Charles and Rita Anderson Foundation  
 Apple, Inc.  
 Bank of America Charitable Gift Fund  
 Bonisteel Foundation  
 Charles Schwab Corporation Foundation  
 Judith Haskell Brewer Fund of The  
 Community Foundation Serving  
 Richmond & Central Virginia  
 Foundation  
 Marvin and Betty Danto Family  
 Foundation  
 Mae E. Demmer Charitable Trust  
 Dustin's Dream Inc.  
 Ella Fitzgerald Charitable Foundation  
 Ann & Gordon Getty Foundation  
 The Greater Kansas City Community  
 Foundation  
 Howard Miller Company  
 Howard Miller Foundation  
 Jephson Educational Trusts  
 Benard L. Maas Foundation  
 National Endowment For The Arts

Piper Jaffray  
 The Richard and Mary Pisarczyk  
 Foundation  
 Sage Foundation  
 Hamer D. and Phyllis C. Shafer  
 Foundation  
 Upstaging Lighting & Transport  
 Edwin S. Webster Foundation  
 Macauley and Helen Dow Whiting  
 Foundation  
 Yamaha Corporation of America  
  
**\$5,000 - \$9,999**  
 American Proficiency Institute, Inc.  
 Apache Corporation  
 Attwood Foundation  
 Steven & Kathryn Bandstra Foundation  
 Barnard Foundation  
 Margaret & Marshall Bartlett Family  
 Foundation  
 Sascha Brastoff Foundation  
 The Chicago Community Foundation  
 Coca-Cola Company Matching Gifts  
 Program  
 Jack, Evelyn & Richard Cole Family  
 Foundation

FOUNDATIONS, CORPORATIONS, AND ORGANIZATIONS *continued*

Dick & Betsy DeVos Foundation  
 The Benson & Edith Ford Fund  
 The Greater Cincinnati Foundation  
 Green Brick Foundation  
 Harmony Program  
 Jacobson Associates  
 John P. Kavooras Charitable Trust  
 Music Moves Me Inc  
 North Texas National Christian Foundation  
 Peco Foundation  
 David and Ellen Petrick Foundation  
 Philosopher's Information Center  
 Jerry & Marcia Tubergen Foundation  
 United Jewish Foundation  
 The Stephen E. Upton & Elizabeth Vial Upton Charitable Lead Trust  
 Walt Disney Company Foundation

Frank and Sharon Bustamante Charitable Fund of the Bank of America Charitable Gift Fund  
 Caeli Communications, LLC  
 Carnegie Mellon University School of Music  
 Catanese Customs  
 Chevron Humankind  
 Comerica Charitable Foundation  
 Community Foundation of Greater Chattanooga  
 Corporate Travel Service  
 Council of Michigan Foundations  
 Door County Community Foundation, Inc.  
 Eagan Family Foundation  
 F & J S Fund, Inc.  
 John J. Frautschi Family Foundation  
 Frey Foundation  
 Frisco Holdings LLC  
 Fruehauf Foundation  
 The GE Foundation  
 Grand Haven Area Community Foundation  
 Grand Rapids Community Foundation

Hagerty  
 IBM Corporation  
 Independent Charities of America  
 Indian River Community Foundation  
 Innovia Foundation  
 JPMorgan Chase Foundation  
 Eli Lilly and Company Foundation  
 Lumina Foundation for Education, Inc.  
 The Mead Foundation  
 Michigan State University Knight Center for Environmental Journalism  
 Microsoft Corporation  
 The Minneapolis Foundation  
 Morley Foundation  
 Charles Stewart Mott Foundation  
 National Christian Foundation, Indiana  
 National Federation of Music Clubs  
 Network For Good  
 Northwestern Mutual Life Foundation Inc.  
 Oliver Family Foundation  
 The Oregon Community Foundation  
 Paice LLC  
 The Pattis Family Foundation  
 Pepsi-Cola Bottling Group

IPR PRODUCER'S CIRCLE and BROADCASTER'S CIRCLE

**IPR Producer's Circle**  
 (\$5,000 and above given to Interlochen Public Radio)  
 Bill and Barb Alldredge  
 Ms. Elaine Amacker Bridges  
 Gloria and Leith Butler  
 Mr. and Mrs. Carl M. DeFaria\*  
 Mr. Charles H. Fultz  
 Dr. and Mrs. Timothy Hanley  
 Cindy and Jon Hann  
 Ms. Nancy Hoagland\*  
 T. Michael and Joan L. Jackson  
 James and Paula Jo Kemler

H. Roemer and Constance McPhee  
 Susan and John Paul\*  
 Linda and Max Proffitt  
 Tom Quinn and Tommy Thompson  
 Mr. Richard M. Smith and Ms. Soon-Young Yoon  
 Ms. Joanne L. Sprouse  
 Mrs. Jeanne Townsend

**IPR Broadcaster's Circle**  
 (\$1,000 - \$4,999 given to Interlochen Public Radio)  
 Porter and Anita Abbott  
 Fred and Helen Richter Altman  
 Ms. Bobbi Ames  
 Robert W. Anderson\*  
 Bill and Vicki Anderson  
 Calvin Baker and Lidia Paz-Baker  
 Mr. David Barger  
 Dr. Richard Beck and Ms. Valerie Harpel  
 Ron and Jane Becker  
 Richard and Lorraine Beers

Petoskey-Harbor Springs Area Community Foundation  
 Ed & June Prein Foundation  
 T. Rowe Price Program for Charitable Giving  
 Renaissance Charitable Foundation Inc.  
 River City Foundation  
 Robet Foundation, Inc.  
 Shepard Family Foundation  
 Sigma Alpha Iota Philanthropies, Inc.  
 Stricof Family Foundation  
 Nathan Tannenbaum Foundation, Inc./ Distelheim/Tannenbaum Family  
 Tulsa Community Foundation  
 University of Colorado Boulder College of Music  
 We Energies Foundation  
 The Weigel Family Foundation  
 Wells Fargo Foundation  
 The Woll-Yellin Family Foundation  
 R M Young Company

Reverend Theodore W. Beiderwieden III  
 Mrs. Ruth Bell  
 James and Madge Berryhill  
 Ueli and Janice Binkert\*  
 Mr. Jerry Bloom  
 Tim and Dana Boals  
 Mr. David Bondurant\*  
 Dan and Jennifer Bonifacio  
 Warren and Beverly Boos  
 Richard and Barbara Bowzer  
 Judy and Kevin Boyle  
 Norton and Mary Lee Bretz  
 Ralph and Lorraine Brickman

IPR PRODUCER'S CIRCLE and BROADCASTER'S CIRCLE *continued*

Mrs. Margaret Bunn  
 W. Clark and Karen Bunting  
 Mr. Tom L. Capua  
 Phil and Barb Chapman  
 Ms. Ann Chinn  
 Don and Marylou Coe  
 Camille Colatosti\*  
 Dr. and Mrs. Michael Peter Collins  
 Ms. Jane R. Comings  
 Stephen and Sheri Constantino  
 Steve Cousins and Terry Donahue Cousins  
 Charles and Carol Creasser  
 Ted and Marcia Curran  
 Mark and Nan Dancer  
 Dr. and Mrs. Mick DeGraeve  
 Ms. Chris Denny  
 Sandra & Gary Drew\*  
 Bill and Pam Evans  
 Mr. and Mrs. William Ewing  
 Caryll Ferguson  
 Ms. Susan Jane Finke  
 Carl and Rondi Fry  
 Carl and Eileen Ganter\*  
 Martha Garber  
 Bob and Nancy Giles  
 Lois Goldstein and John Heiam  
 Mrs. Barbara Goodearl  
 David and Penelope Gordon  
 Paul and Wendy Greeney  
 Mr. Jerrold Gretzinger and Ms. Meg Staley  
 Frank and Connie Hagelshaw  
 Byron Hanson\*  
 John and Judy Harnish  
 Nancy M. Hedges  
 Mrs. Coggin A. Heeringa\*  
 Mr. John Martin Hein\*  
 Walter D. Herrick  
 John and Shirley Hoagland  
 Pam and Steve Horne  
 Michael and Marsha Howard

Ms. Marcia Hughes  
 Al and Julie Hurd  
 Mr. and Mrs. Bart Ingraham\*  
 David and Ann Irish  
 Mr. Timothy M. Jackson\*  
 Brian and Jennifer Jaffe\*  
 John J. and Margaret M. Jaqua  
 Judy Jashinsky  
 Mr. Thomas C. Jones  
 Marana Webber Tost Charitable Fund  
 Mrs. Linda Kehr  
 Dr. Charles and Dolores Kelly\*  
 Kevin and Trine Kelly  
 Pat and Barb Kessel\*  
 Mr. David M. Kilian  
 Jim and Kris Kunz  
 Meg Lau  
 Hazel Lawrence  
 Mr. and Mrs. Ward Lewis  
 Ms. Dency A. Lippert\*  
 Bruce and Julie Lowing  
 Marilyn Lufkin  
 Greg and Stephanie Luyt  
 Mr. Donald G. MacDougall  
 Dr. and Mrs. Carl G. Madion  
 Ms. Kara Madion  
 Karl and Barbara Marsh\*  
 Mary Marshall  
 Mr. and Mrs. John W. Matz, Jr.  
 Lawrence Mawby and Lois Bahle  
 Honnie and Dick McClear  
 Ms. Meredith Parsons McComb\*  
 John and Pamela McDonald  
 Mrs. Nancy McGuire  
 Mr. James A. McIntyre  
 Mrs. Patricia A. McMahon-Eichenlaub\*  
 Ann McPhail  
 Cathleen Dodge Miller and Clark Miller  
 Clark Miller and Cathleen Dodge Miller\*  
 Mr. and Mrs. Eugene Miller III  
 Dr. and Mrs. G. Robert Miller

Ray and Maryellen Miller  
 Bud and Joyce Mims  
 Mr. James R. Modrall III  
 Ms. Julie Moran  
 Dr. and Mrs. Paul L. Morris\*  
 Bette and Benson Munger\*  
 Ron Munson\*  
 Bonnie Nescot and Tim Barr  
 Sabrina Newton  
 Chris Noga  
 Dr. and Mrs. William Northway  
 Bruce and Becky Ogilvie  
 Martha Orloff  
 Peter and Sarah Payette\*  
 Mr. Karl Pearson  
 Ms. Mary Peters  
 Steve and Sarah Pfeil  
 Mr. William Premo and Ms. Pam Prairie  
 David Wright and Julie Quinn  
 Ken Bloem and Royce Ragland\*  
 Ms. Polly Rea  
 June Rengo  
 Patricia Richardson  
 Jim and Julie Runstrom  
 Dr. Bill Scharf  
 Don and Cathy Schepers\*  
 Matthew Schmidt and Kate Greene  
 Ms. Karla Sherman  
 Dr. Stephen Shetron  
 Mr. John R. Shreves  
 Mr. Edward Sihler  
 Mr. and Mrs. Robert A. Smart  
 Ms. Christine K. Smith\*  
 Dr. Aaron C. Stander and Ms. Mary K. Monteith\*  
 Tonia Steed and Victor Bondi  
 Ross and Dianne Stephenson  
 John and Nan Strickler  
 Elizabeth and Jerry Suminski  
 Charles and Linda Svec  
 Dr. Gene D. Tang

Jerry R. Tejcek, DC  
 Carol and Dick Thompson  
 Mark Tosiello and Michelle Urso  
 Stanley Towers  
 John and Penny Tropman  
 Mrs. Gerhild Uhl  
 Durette M. Upton\*  
 David Vendley  
 Ms. Suzanne Voltz  
 Dr. Petra von Kulajta and Mr. Timothy Werner  
 Ms. Frances Wallace  
 Rick and Christine Walter\*  
 Mr. and Mrs. Raymond A. Weigel III  
 Mr. and Mrs. Patrick Wicksall  
 Tim and Kathleen Wiley  
 John Wilkinson and Robin Silva-Wilkinson  
 Janet Wolf  
 Joan and Randy Woods  
 Mr. and Mrs. Ken Wyckoff  
 Judith Yates  
 Ms. M. Christine Young  
 Robert and Pauline Young  
 Simone and Thomas Young  
 Dr. C. Winton Reynolds III and Ms. Lauren Zachry-Reynolds\*

**Matching Gifts**  
**The following corporations and foundations gave to Interlochen through their matching gift programs:**  
 BP Foundation, Inc.  
 Cleveland H. Dodge Foundation Inc.  
 CME Group Community Foundation  
 Coca-Cola Company Matching Gifts Program  
 ConocoPhillips  
 Doris Duke Charitable Foundation  
 Eaton Corporation  
 Exxon Corporation Education Foundation  
 Frankfort Rotary Club  
 Hallmark Cards Inc.  
 IBM Corporation  
 Illinois Tool Works Foundation  
 JPMorgan Chase Foundation  
 Eli Lilly and Company Foundation  
 Lumina Foundation for Education, Inc.  
 Charles Stewart Mott Foundation  
 National Guardian Life Insurance Company  
 Network For Good  
 Northern Trust  
 Northwestern Mutual Life Foundation Inc.  
 One Williams Center  
 Pfizer Inc.  
 Pharmacia & Upjohn Foundation  
 PNC Financial Services Group  
 PNM Resources Foundation  
 Qualcomm Matching Grant Program  
 Shell Oil Company Foundation  
 Steelcase Foundation  
 Suttons Bay Rotary Club  
 Texas Instruments Foundation  
 Thrivent Financial for Lutherans  
 Walt Disney Company Foundation  
 We Energies Foundation  
 Wells Fargo Foundation  
 WHI/WHITCO Employee Matching Gift Program

**IPR Underwriters**  
 Addiction Treatment Services  
 Alfie Logo Gear  
 Amical  
 Bahle's of Suttons Bay  
 Bay Eye Associates  
 Bay Street Orthopaedics  
 Becky Thatcher Designs, Inc.  
 Betsie Bay Furniture  
 Bowerman, Bowden, Ford, Clulo & Luyt, PC  
 Bud's of Interlochen  
 CBS Solar  
 Charles Schwab - Traverse City  
 Chase  
 Cherryland Electric Cooperative  
 City Opera House  
 Classic Interiors & Design  
 Crooked Tree Arts Center  
 Crosshatch Center for Art & Ecology  
 Crystal Mountain  
 Debra Lewis, DDS  
 Devette & Ford  
 Dingeman & Dancer PLC  
 Edson Farms Market & Deli  
 Edward's Home Furnishings  
 Enerdyne  
 Evola Music  
 Field Crafts  
 FIM Group  
 Frankfort - Elberta Chamber of Commerce  
 Frankfort DDA  
 Frankfort Insurance Agency, Inc.  
 Garden Theater  
 Gaylord Community Orchestra  
 Geofurnace  
 Goodwill Industries of Northern Michigan  
 Grand Traverse Ophthalmology Clinic  
 Groundwork Center  
 GT Community Foundation  
 Harbor Springs Festival of The Book  
 Higher Grounds Trading Co.  
 Honor/Onekema Building Supply

Jack Lane Team  
 James C. Smith Fine Jewelry  
 Kathy Neveu - Real Estate One  
 Local Difference. LLC  
 Long Lake Marina  
 Magnum Hospitality  
 Mammoth Distilling  
 Marathon Automotive  
 Martha's Leelanau Table  
 Mary's Kitchen Port  
 Michigan Shores Cooperative  
 Mission Point Press  
 Music House Museum  
 No Spills Committee  
 Northway Orthodontics  
 Odom Reusable Building Materials  
 Oil and Water Don't Mix  
 Oryana Food Cooperative  
 Paul Gerhart  
 Petoskey Harbor Springs Area Community Foundation  
 Preston Feather Building Centers  
 Pure Water Works  
 Ramsdell Regional Center For The Arts  
 Right Brain Brewery  
 Roaster Jack Coffee Co.  
 Safety Net  
 Shanty Creek Resorts  
 State Savings Bank  
 Sterling Law Offices  
 Stormcloud Brewing Company  
 Suzy Voltz, Real Estate One  
 Ted X Traverse City  
 The Candle Factory  
 The Riverside Inn  
 Three Pines Studio  
 Traverse City DDA/DTCA  
 Traverse Symphony Orchestra  
 Unitarian Universalist Congregation of Petoskey  
 Village At Bay Ridge  
 Walloon Writers Review

Wares Auto Sales  
 Warren Cline, PLC  
 Writers Series of Traverse City

**Interlochen Presents Sponsors**  
 Bay Area Transportation Authority  
 Cherry Capital Airport  
 Crystal Mountain Resort  
 Hagerty  
 Howard Miller Company  
 Huntington National Bank  
 Tom's Food Markets

**Interlochen Presents Media Sponsors**  
 104.5 Bob FM  
 106 KHQ  
 106.7 FM (ESPN Radio)  
 107.5 FM WCCW  
 9&10 News (CBS)  
 94.3 92.5 The Fox FM  
 96.7 The Bull  
 106.3 FM WQEZ  
 Bay Life North Magazine  
 Big Country 102.9  
 Black Diamond Broadcasting  
 Boardman Video Productions  
 Classic Rock the Bear  
 Easy 95.5 FM (WQEZ)  
 Edible Grande Traverse  
 Fox 32 News  
 Interlochen Public Radio  
 Lite 96.3  
 MeTV  
 Northern Express  
 Rock 105 FM  
 The CW 32  
 The Ticker  
 Traverse Bay Family Magazine  
 Traverse City Business News  
 Traverse City Record Eagle  
 UpNorth Media

WKLT  
 WTCM FM  
 WTCM Newstalk 580  
 Z-93

**Gifts in Honor or in Memory**  
**Gifts were given by donors in honor or memory of the following:**

Matthew Hazelwood  
 Rob Hecksel  
 Aiden Henkel  
 Kathie Herkelmann  
 Ben Hieber  
 W. Alan Higgs  
 Joe Hill (IAA '12)  
 Howard Hintze  
 Harry Wayne Hoffman Jr.  
 David Holland  
 Madeline Horton  
 Diana and Jim Huckle  
 Robert and Ruth Hughes  
 Loretta Hughes  
 Mary Ellyn Hurley  
 Your daughter, Isabel  
 Christopher A. Izzo  
 T. Michael Jackson  
 Roger E. Jacobi

Our granddaughter, Kuluxka James  
 Jerome Jelinek  
 Aaron Johnson (IAC 04-07, IAA 07-08)  
 Dr. Jerome Kagan  
 George Kempton  
 Barbara Kratchman's birthday  
 Dr. Ples Latson Kujawa  
 Ellen Ruth Kushner  
 Dorothy LaPlace  
 Melvin S. Larimer  
 Clifford B. LePage Jr.  
 Betsy LePoidevin  
 Elizabeth J. "Betty" Lewis  
 Kenneth Lewis  
 Hannah Long  
 John Manuel  
 Dorothy Marx  
 Aaron Leonard McCloud  
 Blair McMillen's 48th birthday  
 Sue Mekula  
 Susan Mekula (Mekula Family Endowed Scholarship)  
 Leon and Folly Michael  
 Patrick Mitten (IAA '92)  
 Bill Montgomery  
 Janet Morris  
 Tom Morris

Debbie Munson  
 Tom Murdock  
 Leonard Nancarrow  
 Gertrude Olsen  
 Chet Ostaszewski  
 Katie Parvu  
 Thom Paulson  
 Peter Payette Sr.  
 Steve Perry  
 Marian Petersen  
 George Petritz  
 Ralston O. Pitts  
 Marguerite "Midge" Plumley  
 Dr. Lawrence M. Probes  
 David and Elisabeth Rees  
 Eli Reisz  
 Richard S. Richter  
 Thomas "Tom" H. Ronayne  
 Harrison Rowe  
 Daniel Robert Ruggles  
 Fred Sabel  
 Barbara Taylor Sandys  
 Doris Scherzer, who played in the Interlochen Orchestra during the 60s-90s  
 Richard Schwartz  
 Elaine Silets birthday

Zachary Simonds  
 Gracie Hardy Smith  
 Isabel & Larry Smith's 60th Wedding Anniversary  
 Dr. William A. Spencer (IAC 45-49)  
 Glenna Spindelman  
 Adrienne Stamell  
 Interlochen Adult Class attendee  
 Yvonne Stephens  
 Dr. Clarence "Dude" Stephenson  
 Ronald Stoops  
 Debbie Street  
 Ann and Byron Summer Scholarship  
 Anna-Maria Sundwall  
 Sigurd Swanson  
 Alexander Szemetylo  
 Margaret (Peggy) Ann Taylor  
 Henri Temianka  
 Perry Townsend  
 Sally Capps Tubbesing  
 Harold Louis VanArmen IV  
 John R. Weatherly  
 Del and Evelyn Weliver  
 Ruth Zaccarello  
 Alexis Zaccarello-Grimes  
 Jenna Zucker

\* Interlochen alumni or staff    ♦ Ten consistent years of giving    ° Deceased





## NAMED SCHOLARSHIPS

These generous supporters transform the lives of generations of Camp and Academy students through endowed scholarships, expendable scholarship gifts of \$10,000 or more, and/or annual scholarships endowed in perpetuity through documented estate gifts. Our talented students also receive support through gifts to the Interlochen Annual Fund. We acknowledge all of these gifts of support with sincere gratitude. To learn more, please contact the Advancement Office at 231.276.7623 or visit [interlochen.org/give](http://interlochen.org/give).

Academy Dance Scholarship  
Academy Endowed Scholarship  
Virginia M. Alten Memorial Scholarship  
Otto and Anna Altman Memorial Endowed Camp Scholarship  
Ann T. and Richard G. Anderson Memorial Fund  
Charles and Rita Anderson Academy Scholarship  
Diane Anderson Endowed Academy Scholarship  
endowed by her father John B. Anderson in honor  
and memory of C. William Trout  
Dorothy Anderson Memorial Scholarship  
Katherine McKee Anderson Endowed Scholarship  
Lois Harper Anderson Scholarship  
Judith Andrews Memorial Camp Scholarship  
Bob Annis Endowed Scholarship  
Bob Armer Endowed Camp Scholarship  
George and Dolores Austin Memorial Scholarship  
Virginia B. Ball Creative Writing Competition Scholarship  
Martin A. Baloyan Memorial Scholarship  
Barnes-Womer Camp Scholarship  
Charles Barr Organ Scholarship  
Barstow Foundation Scholarship  
Phoebe Nickel Barstow Memorial Scholarship  
Margaret Dieterle Bausch Memorial Scholarship  
Donald R. Belcher Memorial Scholarship  
Madeline Belkin Scholarship  
Alfred Berkowitz Foundation Scholarship  
Mandell and Madeleine Berman Foundation  
Camp Scholarship  
Berry Family Scholarship  
Sally Birnkrant-Myers Scholarship  
Frances Blaisdell Endowed Scholarship in Flute  
Boggess Family Endowed Scholarship  
Arnold Bourziel Memorial Scholarship  
Skipper Bourziel Junior Girls Scholarship  
Douglas Boyd Endowed Camp Scholarship for Strings \*

Kate Boyd Endowed Camp Scholarship in Piano \*  
Mr. and Mrs. Fred M. Brakeman Scholarship  
M. Brandenburg Scholarship  
Drs. Susan and Neil Bressler Scholarship  
Bressler WYSO Principal Clarinet Chair Scholarship  
Judith Haskell Brewer Scholarship  
Briggs - McDonald NMC Scholarship  
Charles Brindis and Jo Ann Brindis Goisman  
Camp Scholarship  
Brookby Foundation Scholarship  
Nadine Brunner Endowed Memorial Painting Scholarship  
Donna Louise Brunsma Endowed Scholarship \*  
John Busby Memorial Scholarship  
California Violin Scholarship  
Camp Gifts Scholarship  
Camp/Academy Endowed Scholarship  
Camp Endowed Scholarship  
Camp Opportunity Scholarship  
Canadian Friends of Interlochen Scholarship  
Leo P. and Anthony J. Carlson Camp Scholarship  
Ellen Case Memorial Endowed Scholarship  
Jerome F. and Blanche M. Cerny Scholarship  
Clarence & Grace Chamberlin Foundation  
Academy Scholarship  
Chormann-Hann Endowed Camp Scholarship  
Elizabeth & Michael Clark Memorial Scholarship  
Jonathan David Cohen Memorial Scholarship  
Margie K. & Louis N. Cohen Music Scholarship  
Arthur J. and Glenna B. Collins Scholarship  
Annabel Comfort Memorial Scholarship  
Golde F. Copeland Memorial Scholarship  
Dorothy S. Corson and Lillie B. Scheide  
Memorial Scholarship  
Janice F. Corson Scholarship  
Cowell Family Camp Scholarship

Creative Writing Award Scholarship  
Allen B. Cutting Scholarship  
Jean Dake Memorial Scholarship  
Marvin and Betty Danto Scholarship  
David J. Davison Memorial Scholarship  
Robert Leason Sharpe and Anita C. Dean Scholarship  
Mary Jane Dempier Endowed Scholarship \*  
Lee Wick Dennison Memorial Scholarship  
Helen L. DeRoy Memorial Scholarship  
DeRoy Testamentary Foundation Scholarship  
Detroit Opportunity Scholarship  
Amy M. Devey Endowed Academy Scholarship in Dance \*  
Christina B. Diver Camper Scholarship  
Alden B. Dow Memorial Scholarship  
Edward J. and Joyce Downing Scholarship  
George W. Drake Memorial Scholarship  
Sandra Aldrich Drew Scholarship  
Dr. Scholl Foundation Scholarships  
Dunbar Percussion or Dance Scholarship  
Dustin's Dream Camp Scholarship  
Ella Fitzgerald Foundation Academy Scholarship  
Ella Fitzgerald Foundation Camp Scholarship  
Evola Music Scholarship \*  
Festersen Family Scholarship  
Richard M. Fiegel Memorial Scholarship  
Morris & Nellie Finkelstein, Doherty and House  
Memorial Scholarship  
Gerald J. and Beth B. Fischer Scholarship  
Ken and Penny Fischer Scholarship \*  
Fisher Family Dance Scholarship  
Lawrence L. Fleming Memorial Scholarship  
Barrett Foa Endowed Camp Scholarship in Theatre Arts \*  
Edward E. Ford Foundation Scholarship  
Sidney Forrest Scholarship  
Susan Leigh Foster Endowed Academy Dance Scholarship

Edward P. Frohlich Piano Scholarship  
Edith Davidson Geissler Scholarship  
Otto W. Geissler, Jr. Memorial Scholarship  
Generations Fund Scholarship  
Mary and Donald Gonzales Memorial Scholarship  
James C. Gordon Memorial Scholarship  
Mary and Britt Gordon Endowed Scholarship  
Bertha I. Gordy Memorial Scholarship  
Betty B. Greenfield Scholarship  
Cassel Grubb Cello Scholarship  
Margaret Schuele Haegg Endowed Camp Scholarship  
Romine G. Hamilton Memorial Scholarship  
Marge Hammes Scholarship  
Moe and Francine Handleman Endowed Music Scholarship  
Julia Hansen Scholarship  
Ann and Byron Hanson Endowed Camp Scholarship  
Dr. and Mrs. Howard Hanson Scholarship  
Francis Harlow Scholarship  
Harris Academy Visual Arts Scholarship  
Henry Harris Memorial Scholarship  
Naomi Harris Endowed Camp Scholarship  
Daniel Hartman Memorial Chair Scholarship - Violin II  
William L. Hart Annual Trumpet Scholarship  
Carl E. and Audrey E. Haskett Memorial Scholarship  
William Randolph Hearst Foundation Scholarship  
Bettyjo Heckrodt Memorial Scholarship  
Pierre V. Heftler Memorial Scholarship  
Dorothy L. Henricks Memorial Scholarship  
John and Joan Herlitz Family Scholarship  
Martha and Jack Hicks Scholarship  
Ted R. High Memorial Scholarship  
Barbara B. Hirschhorn Music Campership Endowment  
Kathy Mason Hodges Scholarship  
Russell and Annabelle Holcomb Endowed Scholarship  
Erwin K. Holland-Moritz Scholarship  
Jan Q. Holmquist Scholarship  
Jack (John R.) Hood Endowed Academy Scholarship  
Pamela and Stephen Horne Family Endowed  
Camp Scholarship \*  
Dr. Claire Smith Hornung Intermediate Girl Scholarship  
Page and Dan Houser Scholarship

Marvin C. Howe Horn Scholarship  
Ruth H. Hughes Endowed Dance Scholarship  
Lawrence Hurst Double Bass Endowed Camp Scholarship  
Interlochen Arts Camp Scholarship  
Paul and Leah Israelow and Harriet Israelow Goldner  
Memorial Scholarship  
Roger E. & Mary Jane Jacobi Academy Scholarship  
Roger E. & Mary Jane Jacobi Camp Scholarship  
Roger E. Jacobi & Edward P. Frohlich Scholarship  
William and Helen Jansen Memorial Scholarship  
Donald Johanos Endowed Scholarship  
Betty Bonisteel Johnson Camp Scholarship  
Nicholas A. Johnson Memorial Scholarship  
Paul and Lois Jordan Endowed Scholarships  
Joy Family Endowed Camp Scholarship in Visual Arts  
JSJ Foundation Scholarship  
Mildred and Bernard Kayden Family Endowed  
Camp Scholarship  
R. Graham Keevil Memorial Scholarship  
Caroline Kempton Memorial Scholarship  
George and Joyce Kempton Academy Piano Scholarship  
James D. Kent Endowed Music Scholarship  
David Klein's Golden Ticket Camp Scholarship  
Dr. Marvin Klein Memorial Scholarship  
Klein/Jewell Choral Endowment Scholarship  
Kline Family Scholarship  
Knight Family Scholarship  
Jenny H. and Otto F. Krauss Scholarship  
Laddie A Kubec Scholarship  
Will and Joan Larson Scholarship  
Ledden Family Dance Scholarship  
Lorna and Ernest Lender Scholarship  
Louetta Lerner Endowed Scholarship  
Harold Levine and Faith Forrest Scholarship  
Dorothy Lewand Endowed Scholarship  
Sally A. Lewis Organ Scholarship  
Richard H. and Carolyn Lineback Family Scholarship  
Loomis Endowed Scholarship  
Ted Loudermilk Memorial Scholarship  
Catharine E. "Betsy" Davis Luhman Memorial Scholarship  
Martha Lundy Scholarship

Waldemar and Mary Ellen Lungershausen Scholarship  
Herbert H. Lyon Scholarship  
Joseph E. Maddy Memorial Scholarship  
Reuben C. and Edith W. Maddy Scholarship  
Doris V. Markel Voice Scholarship  
Jennifer Evelyn Marquette Memorial Scholarship  
Martin Family Music Scholarship  
Marvel Family Memorial Scholarship  
John Rust Mattern Memorial Scholarship  
Maui Visual Arts Summer Camp Scholarship  
Ilse Mayfield Scholarship  
Aaron McCloud Memorial Scholarship \*  
Dr. Robert Montague McDonald Endowed  
Arts Academy Scholarship  
Anne McElheny Memorial Music Scholarship  
Whitney S. McGuire Memorial Scholarship  
Edward and Cecily McNeil Camp Scholarship  
Charles K. McWhorter Memorial Scholarship  
Mekula Family Endowed Camp Scholarship  
Memorial Scholarship  
Daniel A. and Vivian Metrick Scholarship  
Judy Pinsof Meyer Annual Camp Scholarship in Dance,  
in honor of June B. Pinsof \*  
Miami Music Project Opportunity Scholarship  
Genevieve Rae Miess Memorial Scholarship  
Miller-Jacobson Scholarship  
Frank Miller Memorial Scholarship  
George Roland and Lillian Postles Miller High School  
Camp Bass Clarinet Scholarship  
Louise Tuller Miller Scholarship  
Monticello College Foundation Scholarship  
Harice K. & Robert T. Mongek Memorial Scholarship  
Shari Morgan and Clara Sabin Camp Scholarship  
Lucy B. Morley Scholarship  
Karen Mumma Endowed Scholarship  
Kelly Muzzi Memorial Scholarship  
Lyle Myers Scholarship  
William and Jeanne Myers Endowed Scholarship  
National Academy of the Arts Scholarship  
Donna V. Neal Endowed Scholarship  
Ralph and Margaret Nehls Memorial Scholarship

Nelson Family GDYO Camp Scholarship \*  
 Ida A. Norlin High School Scholarship  
 Cincinnati, Nouveau Chamber Players and  
 Cincinnati Symphony Orchestra Opportunity Scholarship  
 Julius & Ruth Novick Memorial Scholarship  
 Clara Noyes Endowed Academy Scholarship  
 Travis N.T. Olson and Lucile M. Olson Scholarship \*  
 Anne-Marie Oomen and Katey Schultz ICCA  
 Creative Writing Scholarship  
 Academy Opportunity Scholarship  
 Harding and Ouweleen Family Camp Scholarship  
 William and Martha Paine Orchestral Scholars  
 Fred and Marcia Palmer Memorial Scholarships  
 Jean Parsons Visual Arts Endowed Scholarship  
 W. Calvin and Marian Patterson Endowed Scholarship  
 Shirley Pauley Memorial Junior Orchestra Scholarship  
 Helmer R. and Larida Petersen Scholarship  
 Robert C. Pew Scholarship  
 Janet and Lucas Pfeifferberger Scholarship  
 Polish Endowment Scholarship  
 Herbert & Elsa Ponting Foundation Scholarship  
 Portland Bridge to Interlochen Scholarship  
 William and Leota Ponstingle Camp  
 Endowment Scholarship  
 Hortense Cramer Ramsay Scholarship  
 Milton M. Ratner Foundation Scholarship  
 Reader's Digest Endowed Scholarships  
 David E. Reese Family Foundation Scholarship  
 Mildred Reisner Endowed Scholarship  
 David Scott Rhind Endowed Scholarship  
 Dean E. Richardson Scholarship  
 Josephine F. and N. Sayles Richter Memorial  
 Endowed Camp Scholarship  
 Riverdale Children's Theatre Opportunity Scholarship  
 Rollert Music/Science Endowment Scholarship  
 Alicia Steeves Rowe Scholarship  
 Becky Ruthven Camp Scholarship  
 Sage Foundation Scholarship

Barbara Taylor Sandys Dance Scholarship  
 George and Barbara Schilling Piano Scholarship  
 Robert Scholten Camp Scholarship \*  
 Charles Ward Seabury Scholarship  
 Doris E. Seitz Memorial Scholarship  
 Selmer Company Scholarship  
 Ruth Marda Shanberge Family Endowed Camp Scholarship  
 Michael D. Silber Memorial Scholarship  
 Jonathan L. Silets Memorial Scholarship  
 Harvey M. Silets Memorial Scholarship  
 Silverton Family Camp Scholarship  
 Werner and Elizabeth Simon Endowed Scholarship  
 Singer-Songwriter Academy Scholarship \*  
 Harry A. Sisson Memorial Scholarship  
 Michelle Slater Academy Scholarship  
 Marilyn J. and Don L. Smith Memorial Scholarship  
 Tad M. and Suzanne B. Smith Scholarship  
 Laura Sondée Memorial Scholarship  
 Stephen Sprouse Memorial Scholarship  
 Margaret A. Stace Scholarship  
 Stephenson Endowed Scholarship  
 Shirley Stevens Memorial Scholarship  
 Paul R. Stimson Scholarship  
 James F. Stoddard, MD and Elizabeth A. Stoddard  
 Music Scholarship  
 Mikhail Stolarevsky and Alexander Stolley  
 Concertmaster Scholarship  
 Esther W. Stone Memorial Scholarship  
 Beth Stoner Wiegand, Marjorie G. and  
 Richard P. Stoner Endowed Camp Scholarship  
 Marguerite W. Stracke and Alfred O. Stracke  
 Memorial Scholarship \*  
 Edward Ralph and Kathleen Maguire Sun Music Scholarship  
 Target Foundation Scholarship  
 Booth Tarkington Scholarship  
 Marten and Marie Ten Hoor Memorial Scholarship  
 Laurence W. Thomas Writing Scholarship  
 Lee Madsen Thomas Scholarship

Sarah L. Titus and Tilda Morris Endowed  
 Academy Scholarship  
 Tuesday Musicale/Detroit - Gertrude Greer Scholarship  
 Miles I. Tunnacliff Scholarship  
 Alice C. Tyler Trust Endowed Scholarship  
 Frederick S. Upton Foundation Scholarship  
 Stephen E. and Elizabeth Upton Scholarship  
 Margaret Tyler Vial Scholarship in loving memory,  
 Elizabeth Vial Upton  
 William E. Votruba Memorial Scholarship  
 Robert M. and Lenore Wagner Memorial Scholarship  
 Arlene Wangler Memorial Scholarship  
 A. Montgomery Ward Foundation Scholarship  
 Margaret F. Ward Scholarships  
 Weatherwax Foundation Scholarship  
 Jane Weaver Endowed Scholarship  
 Susan Mott Webb Memorial Scholarship  
 Mrs. Richard H. Webber Scholarship  
 Bessie Mae Weissgerber Memorial Scholarship  
 Wiebener Family Orchestral Scholar  
 Byrdene M. Wilson Memorial Scholarship  
 Matilda R. Wilson Fund Scholarship  
 World Youth Symphony Endowed Scholarship  
 Ben Wright Scholarship  
 Fanny R. Wurlitzer Foundation Camp Scholarship  
 WYSO Endowed Strings Scholarship  
 Avedis Zildjian Company Camp Percussion Scholarships  
 Francis J. and Margaret S. Zimmermann  
 Endowed Scholarship



## THE HERITAGE SOCIETY

The Heritage Society recognizes donors who have honored Interlochen with planned gifts. Heritage Society members have enhanced the tradition of artistic and broadcasting excellence at Interlochen by supporting its future generations with gifts such as bequests, charitable remainder trusts, gift annuities, and life insurance policies.

Mr. and Mrs. Robert A. Alsaker  
Dr. Seth David Ammerman\*  
George W. & Carolyn T. Anderson  
Family Trust  
Mr. Robert Wade Anderson\*  
Mr. Dean W. Anderson\*  
Audrey Andrews\*  
Charles and Laurel Angus  
Jon & Mary Armstrong  
David & Tricia (Graham) Arthurs\*  
Sheila Baker in Memory of  
Dr. Russell Putnam  
Mr. and Mrs. John Vincent  
Balint, Jr.\*  
George and Merry Ball\*  
Mrs. Jean Maschmeyer  
Bardonner ('46)\*  
Mr. Clark W. Barnes\*  
Charles W. Barr II  
Mr. and Mrs. Ned K. Barthelmas  
Kathleen Varney Bates\*  
Walter J. and Jeanne M. Beecher\*  
Ms. Phyllis Gold Berenson\*  
J.G. Bertrand, MD  
Helga & Jerry Bilik\*  
Mr. William Whipple Bing\*  
Thomas E. & Edith M. Bletcher\*  
Mr. Christopher Borgmeyer &  
Dr. Christina Fuhrman\*  
Peter W. Bowman\*  
Mr. Ted Braciak  
Mr. Robert E. Bracken\*  
Mark J. Brandfonbrener\*  
Ms. Maureen Breen  
Ms. Victoria Brehm\*  
Ms. Ellen Brehm\*  
Marcy Jean Brenner\*  
Michael Jay Bresler\*  
Ann Marie and Gregory Brink\*

Eric T. Bronsky\*  
Dr. Leslie Ellen Brown\*  
Mrs. Doris A. Brucker\*  
Gordon F. Brunner Family  
Helen and Tony Buday  
Mrs. Dorothy B. Burke  
Jack L. Cameron\*  
Christopher T. Cantwell\*  
Marilyn Carlson\*  
Ruth Aurand Casserly\* $\Delta$   
Ralph and Maureen Cerny  
Lawrence W. and Barbara L.  
Clarkson\*  
Mr. and Mrs. Don V. Cogman  
Mr. Richard F. Colker  
Mr. Fred Michael Combs\*  
Eileen Hanson Combs\*  
Ms. Catherine L. Compton\*  
Mr. and Mrs. James A. Cooper  
Mr. Thomas H. Corson  
Sharon F. Cramer, Ph.D.\*  
Kenneth Vaughan Dake, Jr.\*  
Joanne Danto\* $\Delta$   
Betsy Davidson and  
Sheryl Coston\*  
Ms. Portia Dean  
Mrs. Peggy Dendrinis  
Michael Dermody\*  
Mr. John Robert DeYoung\*  
John and Sally Dickinson\*  
Mr. Robert Byron Dimmick\*  
Ms. Beth Susan Dochinger\*  
Robert & Nancy Doughty  
Sandra & Gary Drew\*  
Ms. Julie Irene Duke\*  
Diane L. Dupuis\* $\Delta$   
Marge Eckert\*  
Carl Ellenberger &  
Emi L. Snavely\*

Carol and Charles Emmons, Jr.\*  
Stephanie Glazer Ettelson\*  
Barbara & Gordon Evans\*  
Ann Fairhurst & Mark Cipra\*  
Ms. Diana Jean Farran\*  
Michael C. Faulhaber\*  
Jo Faulmann\*  
Richard Finkbeiner\*  
Dr. Michael James Finton\*  
Kenneth and Penelope Fischer\*  
Gerald B. and Catherine L.  
Fischer\*  
Nancy Vaden Fitton\*  
Mr. James R. Flagg  
Mr. David Foster\*  
Jay Frost and Yuko Iida\*  
Andrew Gerber\* $\Delta$   
Dr. Beth Gilbert\*  
Mr. Randall Kerry Goff\*  
Dr. George Goldberg\*  
Mr. and Mrs. Sheldon Goodman  
Barbara Gordon and  
Bradley Gordon  
Roberta Gordon\*  
C. Joanne Grabinski\*  
Ms. Sondra Joyce Graff\*  
Ms. Nancy Hancock Griffith\*  
Miss Helen J. Grinnell  
Margie Guyot\*  
Meri Gyves\*  
Luke Haase  
Daniel & Pamela Hann\*  
Michael Hansen  
Ms. Julia Hansen\*  
Ms. Judith Rachel Harris and  
Mr. Tony Woolfson\*  
Mrs. Elizabeth Lindsay Harrison\*  
Mrs. Keith Harvey  
Mr. David B. Hattner\*

Mr. Stephen E. Hayden\*  
Paul Heaton\*  
Ms. Ruth Mary Heeler\*  
Mrs. Coggin A. Heeringa\*  
Eleanor J. Heinz\*  
Mr. David F. Heroy\*  
Mr. Walter Herrick  
Martha and Jack Hicks\*  
Dr. Barbara C. High  
Dr. Philip Hillstrom\* $\Delta$   
Rebecca Hinks\*  
Mr. Howard H. Hintze\*  
Mrs. Vern (Shirley) Stocklin  
Hipwell\*  
Jacqueline R. Hofto\*  
Ms. Carolyn Kimball Holmquist  
Gary J. Holt\* $\Delta$   
Barbara & Donald Hosmer\*  
Dr. Karen Hrapkiewicz\*  
Ms. Candace M. Hughes\*  
Julie M. & Albert E. Hurd, 3d  
Barton J. Ingraham & Gail G.  
Ingraham\*  
T. Michael and Joan L. Jackson  
Mr. Timothy M. Jackson\*  
Daniel Jackson\*  
Ms. Emmy Jacobson  
Roseanne Jamrok\*  
Mrs. Marilyn R. Johnson  
Mr. William C. Johnson  
Liz Johnson\*  
Mr. and Mrs. Robert Glen Jones  
Dr. and Mrs. Paul H. Jordan, Jr.  
Mr. William Joy  
Mr. Edward W. Kahler Jr.\*  
John R. Kane\*  
Daniel L. Kanter\*  
Richard A. Kaplan\*  
Ms. Jan Reinhart Kelley\*

Dr. Charles & Delores Kelly\*  
Mr. and Mrs. George R. Kempton $\Delta$   
Mr. and Mrs. Bernard Kent\*  
Alan R. Klispie and  
Cindy Scaruffi Klispie\*  
Carl Koivuniemi & Paul Burkhardt\*  
Mr. Robert James Lange\*  
Richard Larkin\*  
Judy Kutzen Levin\*  
Richard and Sally Lewis\*  
Ms. Jill Libman\*  
Ms. Louise Abigail Linden\*  
Mr. Lewis Fredric Lipnick\*  
Dr. and Mrs. John Lipson\*  
Arthur P. Logan\*  
Mrs. Maureen Morrison Long\*  
Bruce A. Loomis  
Kenneth Lowenberg\*  
Kate Lunsford\*  
Carl and Carolyn Maksimowicz  
Miss Rosemary M. Malocsay\*  
Roy Malool  
Malcolm Manley  
Drs. William B. and  
Yvonne C. Martin  
Laura & Christopher Martin\*  
John Ruder Mason\*  
Mr. and Mrs. Gary May  
Mr. and Mrs. Mark P. Mayfield\*  
William J. McClintock\*  
Patricia Kaiser McCloud\*  
Kathy McCune\*  
John McGarry and  
Michelle Wernli\*  
Joel McNeely and  
Margaret Batjer\*  
Nancy J. Meek  
Mr. and Mrs. Daniel A. Metrick\*  
Raymond A. Miller $\Delta$

The Honorable and  
Mrs. William G. Milliken  
Drs. Nicholas and  
Elaine Mischler  
Brian R. Morgan  
Craig and Shari Morgan\*  
Dr. and Mrs. Paul L. Morris\*  
Dr. and Mrs. Harold M. Nelson  
The Reverend Douglas  
Reed Nettleton\*  
Mr. and Mrs. Myrl D. Nofziger  
Mrs. Richard W. Olson  
Mr. and Mrs. E. George Osius\*  
Kathy Wells Paauw, 77\*  
Mr. Daniel Abbott Packard IV\*  
Ms. Cyd Pacot  
Janet L. Paepke\*  
Daniel and Barbara Palazuk\*  
Mr. Lee Edward Percy\*  
Susan Myers Peterson\*  
Ms. Rebecca Phelps and  
Rev Dr. Linda Patrick\*  
Joan Pollock\*  
Delmar & Ruth Proctor\*  
Max and Linda Proffitt  
Leeann Ray & Kevin Graham\* $\Delta$   
Sue Raye  
Sarah Marks Richards\*  
Frank & Milli Richmond\*  
Charlotte (Lytle) Moon  
(Robbins)\*  
Edward Roberts III and  
Wilma J. Patterson  
Mary Agnes Roberts\*  
Ms. Cynthia Elayne Robertson\*  
Lynn K. White and  
Barrett J. Rollins\*

Mr. John S. Ross, Jr. and  
Mrs. Ruth D. Ross  
Becky Ruthven  
Alexander G. Ruthven, II  
Mr. and Mrs. David Sanders  
Robert C. Scholten\* $\Delta$   
Libby Parkhurst Scott\*  
Ms. Melinda Scott\*  
Mr. Stephen Shetron  
Mary DeLano Sholkovitz\*  
Steven and Rachel Sindell\*  
Claire Corson Skinner and  
James P. Skinner\*  
Van P. and Margaret A. Smith  
Dr. Martha L. Smith  
Larry & Isabel (Izzy) Smith\*  
Dr. Linda Snyder\*  
Mr. and Mrs. Joseph J.  
Sofhauser\*  
James and Ann Spica\*  
Arturo Steely\*  
Martha Purdy Stein\*  
Catherine Stephenson\*  
Ms. Marjorie Stettbacher\*  
Mr. Daniel John Stolper\*  
Dr. Sallie Streib\*  
Tom Sudinsky / Scott Sproles\*  
Evy Kaplan Fischlowitz Sussman\*  
Gina Maria Tabachki\*  
Susan and George Tagatz\*  
Allen & Ann Taylor  
Mr. David Terrell and  
Mrs. Diana Terrell  
Ms. Catherine-Aimee L.  
Thompson\*  
Miss Frances Eleanor Tibbals\*

Art & Jill Tiefenbach $\Delta$   
Rev. Dr. Christina L. Tillotson\*  
Philip and Julie Trudeau  
Randy and Patty Tucker\*  
Ms. Eugenia K. Ulrich  
Mr. and Mrs. William D. Upton  
Margaret A. Valade  
Roger and Tina Valade\*  
Roberta Ciasullo VanMeter\*  
Dr. Toni VanHandel  
Stephen Vann\*  
Ms. Suzanne Voltz  
Erika Deane Walker\*  
Anne-Marie Wall  
Ms. Suzanne Walters\*  
Michael A. Waschevski\*  
Ellen Elliott Weatherbee\*  
Mr. and Mrs. Donald Weinberg\*  
Frederick Weldy\* $\Delta$   
Candace Wiebener\*  
Mrs. Ieva Wiechmann  
Diane L. Wilbur  
The Honorable Kurtis Wilder  
Joan Williams\*  
Mr. George J. Worden\*  
Mr. John Wunsch and  
Ms. Laura Wigfield\*  
Natalie Priest Yaw and  
Scott Erskine\* $\Delta$   
Naomi Yoelin\*  
Ms. Shirley Young  
Dr. Elizabeth Young and  
Dr. Robert Lovell\*  
Mr. Barry Zalph\*  
Christine Heustis Zimmer\*

\* Interlochen alumni

 $\Delta$ New Heritage Society Members

\* Interlochen alumni

 $\Delta$ New Heritage Society Members

## Leave a lasting legacy with a planned gift

You have the opportunity to transform young artists' lives and support arts education, public broadcasting, and presentations. Through planned giving, you can find the charitable gift plan that best fits your goals for your family, finances, and philanthropy.

**Bequests.** The simplest way to make a planned gift is to name Interlochen Center for the Arts and/or Interlochen Public Radio in your will. You can make a bequest of a certain dollar amount, a particular piece of property, a percentage of your estate, or a “residual” gift (a gift from what is leftover after making specific provisions for your loved ones).

**Gifts From Life Insurance or Retirement Plans.** Another option is to name Interlochen Center for the Arts and/or Interlochen Public Radio as a beneficiary of your life insurance or retirement plan. When the original purpose for such plans no longer applies—such as to educate children who are now grown or to provide financial security for a spouse—these assets can be redirected to help support a cause you value.

**Gifts That Pay You Income.** If you'd like to support our mission and receive steady payments during your retirement years, a charitable gift annuity or a charitable remainder trust may be right for you.

*If you would like to have a confidential conversation about supporting Interlochen Center for the Arts and/or Interlochen Public Radio with a planned gift, or if you have already included Interlochen in your estate plans but are not yet a recognized Heritage Society member, please contact the Director of Planned Giving, Kathleen Kasdorf, at 231.276.7637 or [kathleen.kasdorf@interlochen.org](mailto:kathleen.kasdorf@interlochen.org).*

## STATEMENT OF FINANCIAL POSITION

	May 31, 2019	May 31, 2018
<b>ASSETS:</b>		
Cash and cash equivalents	\$ 10,711,578	\$ 11,316,415
Investments	135,986,567	138,815,056
Accounts receivable, net of allowance of approximately \$3,000,000 in 2019 and \$2,777,000 in 2018	32,262	253,935
Gifts receivable	7,159,495	7,273,406
Prepaid expenses and other receivables	1,032,131	664,638
Inventories	878,177	982,497
Land, buildings, and equipment, net	68,868,330	56,119,923
Other assets	1,003,264	994,686
<b>TOTAL ASSETS:</b>	<b>\$ 225,671,804</b>	<b>\$ 216,420,556</b>
<b>LIABILITIES:</b>		
Accounts payable - trade	\$ 974,137	\$ 691,791
Accrued liabilities	8,452,650	6,910,461
Tuition deposits and other	13,024,281	12,631,163
Annuities payable	494,009	555,063
Bonds payable net of debt issuance costs of \$160,716 in 2019 and \$171,431 in 2018	25,239,284	25,228,569
<b>TOTAL LIABILITIES</b>	<b>48,184,361</b>	<b>46,017,047</b>
<b>NET ASSETS:</b>		
Without donor restrictions	124,826,616	110,909,326
With donor restrictions	52,660,827	59,494,183
Total net assets	177,487,443	170,403,509
<b>TOTAL LIABILITIES AND NET ASSETS</b>	<b>\$ 225,671,804</b>	<b>\$ 216,420,556</b>

## STATEMENT OF ACTIVITIES AND CHANGES IN NET ASSETS

	Without Donor Restrictions				With Donor Restrictions							May 31, 2019 Total
	Operating Funds	Designated Funds	Designated Endowment Funds	Total Without Donor Restrictions	Scholarship Funds	General Funds	Temporary Endowment Funds	Plant Funds	Permanent Endowment Funds	Total With Donor Restrictions		
<b>REVENUES AND OTHER ADDITIONS:</b>												
Gross tuition and student fees	\$ 46,651,258	\$ -	\$ -	\$ 46,651,258	\$ -	\$ -	\$ -	\$ -	\$ -	\$ -	\$ -	\$ 46,651,258
Assets released from restrictions:												
Operating item:												
Financial aid	5,151,157	-	(50,683)	5,100,474	(3,903,466)	(12,288)	(1,184,720)	-	-	(5,100,474)	-	-
Less financial aid grants	(15,698,787)	-	-	(15,698,787)	-	-	-	-	-	-	-	(15,698,787)
Net tuition and student fees	36,103,628	-	(50,683)	36,052,945	(3,903,466)	(12,288)	(1,184,720)	-	-	(5,100,474)	-	30,952,471
Ticket sales	3,090,929	-	-	3,090,929	-	-	-	-	-	-	-	3,090,929
Lodging	1,383,362	-	-	1,383,362	-	-	-	-	-	-	-	1,383,362
Retail sales	2,053,715	-	-	2,053,715	-	-	-	-	-	-	-	2,053,715
Contributions and grants	1,443,664	155,184	60,952	1,659,800	3,915,754	699,380	-	4,994,141	2,579,438	12,188,713	-	13,848,513
Net gain of investments	-	1,358,662	1,461,899	2,820,561	-	40,745	1,522,450	240,136	-	1,803,331	-	4,623,892
Endowment allocation	1,617,933	-	-	1,617,933	(1,617,933)	-	-	-	-	(1,617,933)	-	-
Other revenues	1,111,464	74,234	(78,861)	1,106,837	4,108	3,862	-	947	95	9,012	-	1,115,849
Total revenues and other additions	46,804,695	1,588,080	1,393,307	46,786,082	(1,601,537)	731,699	337,730	5,235,224	2,579,533	7,282,649	-	57,068,731
<b>COST OF GOODS AND SERVICES:</b>												
Artist fees	1,858,798	11,810	-	1,870,608	-	5,050	-	(4,769)	-	281	-	1,870,889
Cost of goods sold	1,013,944	5,649	-	1,019,593	-	-	-	-	-	-	-	1,019,593
Total cost of goods and services	2,872,742	17,459	-	2,890,201	-	5,050	-	(4,769)	-	281	-	2,890,482
<b>COST OF OPERATIONS:</b>												
Salaries, wages, and benefits	29,649,761	566,956	-	30,216,717	-	210,043	-	1,292	-	211,335	-	30,428,052
Food costs	1,547,424	-	-	1,547,424	-	3,455	-	-	-	3,455	-	1,550,879
Contracted services	835,076	610,647	-	1,445,723	-	12,223	-	34,351	-	46,574	-	1,492,297
Supplies	1,592,691	1,520,978	-	3,113,669	-	150,738	-	358,157	-	508,895	-	3,622,564
Repairs and maintenance	901,375	68,667	-	970,042	-	3,651	-	31,481	-	35,132	-	1,005,174
Leases and rentals	342,672	30,165	-	372,837	-	5,172	-	500	-	5,672	-	378,509
Utilities	1,010,390	-	-	1,010,390	-	-	-	-	-	-	-	1,010,390
Insurance	341,577	5,989	-	347,566	-	-	-	12,063	-	12,063	-	359,629
Telephone and postage	626,100	5,412	-	631,512	-	-	-	-	-	-	-	631,512
Other operational	87,433	167,201	-	254,634	-	12,627	-	-	-	12,627	-	267,261
Total cost of operations	36,934,499	2,976,015	-	39,910,514	-	397,909	-	437,844	-	835,753	-	40,746,267

(continued)



## STATEMENT OF ACTIVITIES AND CHANGES IN NET ASSETS (CONTINUED)

	Without Donor Restrictions				With Donor Restrictions						May 31, 2019 Total
	Operating Funds	Designated Funds	Designated Endowment Funds	Total Without Donor Restrictions	Scholarship Funds	General Funds	Temporary Endowment Funds	Plant Funds	Permanent Endowment Funds	Total With Donor Restrictions	
<b>GENERAL AND ADMINISTRATIVE:</b>											
Marketing	\$ 793,939	\$ 23,886	\$ –	\$ 817,825	\$ –	\$ 8,250	\$ –	\$ 30,796	\$ –	\$ 39,046	\$ 856,871
Travel and entertainment	1,131,213	235,709	–	1,366,922	–	135,055	–	459	–	135,514	1,502,436
Professional services	542,857	268,908	–	811,765	–	–	–	–	–	–	811,765
Other	769,088	418,559	–	1,187,647	–	44,620	–	5,000	–	49,620	1,237,267
Total general and administrative	3,237,097	947,062	–	4,184,159	–	187,925	–	36,255	–	224,180	4,408,339
Total expenses before depreciation	43,044,338	3,940,536	–	46,984,874	–	590,884	–	469,330	–	1,060,214	48,045,088
Increase (decrease) in net assets before depreciation and non-operating items	3,760,357	(2,352,456)	1,393,307	2,801,208	(1,601,537)	140,815	337,730	4,765,894	2,579,533	6,222,435	9,023,643
Depreciation Expense	1,939,709	–	–	1,939,709	–	–	–	–	–	–	1,939,709
Assets Released from Restrictions/Transfers											
Non-operating items - Capital and other	11,239,043	5,295,208	(3,688,955)	12,845,296	1,414,412	2,948	(319,355)	(13,943,301)	–	(12,845,296)	–
Net Increase (Decrease) in Net Assets	13,059,691	2,942,752	(2,295,648)	13,706,795	(187,125)	143,763	18,375	(9,177,407)	2,579,533	(6,622,861)	7,083,934
Net Assets, beginning of year	23,071,306	43,555,410	44,493,105	111,119,821	57,038	1,024,575	11,182,708	14,525,429	32,493,938	59,283,688	170,403,509
Net Assets, end of year	\$ 36,130,997	\$ 46,498,162	\$ 42,197,457	\$ 124,826,616	\$ (130,087)	\$ 1,168,338	\$ 11,201,083	\$ 5,348,022	\$ 35,073,471	\$ 52,660,827	\$ 177,487,443

# The Board of Trustees and Officers

The Board of Trustees is the governing body of Interlochen Center for the Arts. It provides leadership to guide the institution and ensure its future success through vigilant oversight in support of its vision and values. The Board has fiduciary responsibility to preserve, protect, and promote the assets, reputation, and programs of Interlochen Center for the Arts. Members serve to advance its mission in strategic and competitive directions.

## CHAIR

**Glynn T. Williams**  
President and CEO  
Williams & Moore Capital Corp.  
Reliance Aerotech, Inc. & Reliance  
Aerotech Services, Inc.  
Navhouse Corporation  
Authentic Seacoast Company  
Toronto, Canada

## VICE-CHAIRS

**Sarah Harding**  
Associate Professor  
IIT Chicago-Kent College of Law  
Evanston, IL

**The Honorable Kurtis T. Wilder (retired)**  
Of Counsel, Butzel Long  
Novi, MI

## TRUSTEES

**Keith W. Baum**  
Managing Director  
Asset Management, Abbot Downing  
Scottsdale, AZ  
(IAA 74-76)

**Evan Breibart**  
Solicitor  
London, UK

**Andrew W. Cordonnier**  
Partner, Grant Thornton LLP, (retired)  
Provincetown, MA  
(IAC 80, IAA 80-81)

**Casey G. Cowell**  
Founder, Chairman  
Boomerang-Catapult, LLC  
Traverse City, MI

**Dr. Mohamed A. El-Erian**  
President-Elect, Queen's College,  
Cambridge University,  
Chief Economic Advisor, Allianz  
Laguna Beach, CA

**Saul Goldstein**  
CEO/CIO, ActivumSG Capital Management  
London, UK

**Cynthia L. Hann**  
Vice President, Chormann  
Family Foundation  
Oakton, VA  
(AS 78-79)

**Stephen E. Hayden**  
Vice Chairman and Chief  
Creative Officer (retired)  
Ogilvy & Mather, Inc.  
New York, NY  
(IAC 62, IAA 62-64)

**Nancy L. Hoagland**  
President, Mariel Foundation  
Maple City, MI  
(IAC 74)

**Dean W. Anderson\***  
Deputy Director (retired)  
Woodrow Wilson International  
Center for Scholars  
Washington, D.C.  
(IAC 63, 65, ICA St 66, 68-69)

**Robert M. Bass\***  
First City Bank Tower  
Fort Worth, TX

**Paul C. Boylan\***  
Dean (former), School of Music  
University of Michigan  
Ann Arbor, MI

**Jeff Jacobs**  
Jacobs Endeavors, Ltd.  
Brand/Media Strategy  
Santa Barbara, CA

**Susan Kettering**  
Vice President, Kettering Family  
Foundation, Philanthropist  
Professional Photographer  
Maple City, MI

**J. Christopher Kojima**  
Partner, Goldman, Sachs & Co.  
New York, NY

**Barbara Kratchman**  
Founder, President and CEO  
ArtServe Michigan (retired)  
Former Executive Director,  
Michigan Council for the Arts  
State of Michigan  
Bloomfield Hills, MI

**Gregg Latterman**  
Founder, Aware Records  
Co-Founder, Positive Pretzels  
Kenilworth, IL  
(IAC St 88)

**John F. Manuel**  
Vice President, Global Logistics &  
Advance Teams, The Elton John Band/  
Rocket Entertainment (retired)  
Las Vegas, NV  
(IAC 81-82, IAA 82-83)

**Neil M. Bressler, MD**  
Editor in Chief, JAMA Ophthalmology,  
Retina Division (Chief; 2005-2018)  
Professor of Ophthalmology, Wilmer  
Johns Hopkins University  
School of Medicine  
Baltimore, MD  
(IAC 66-72, St 75-76)

**Gordon F. Brunner\***  
Chief Technology Officer (retired)  
Procter & Gamble  
Cincinnati, OH

**David P. Min**  
Vice President of Business Innovation,  
The Walt Disney Co.  
Meno Park, CA

**Dr. Elaine H. Mischler**  
Pediatric Pulmonologist,  
Professor Emeritus, University of  
Wisconsin, School of Medicine  
and Public Health (retired)  
Waunakee, WI

**Thomas W. Morris**  
Retired Artistic Director,  
Ojai Music Festival  
Former Executive Director,  
The Cleveland Orchestra  
Cleveland Heights, OH  
(IAC 59)

**William C. Nelson**  
Consultant, Peregrine Petroleum  
Dallas, TX

**Tom Quinn**  
Attorney/Tax/Insurance Consultant  
St. Pete Beach, FL

**Dr. Barrett J. Rollins**  
Chief Science Officer,  
Dana-Farber Cancer Institute  
Professor of Medicine, Harvard University  
Boston, MA  
(IAC 65-66, 68)

**Lawrence D. Bryan**  
President (former), MacMurray College  
Martinsville, IN

**Harry C. Calcutt III**  
Chairman, CS Bancorp  
Traverse City, MI

**John C. Canepa\***  
Consulting Principal, Crowe Chizek  
Grand Rapids, MI

**Becky Ruthven**  
CEO, Ruthven & Associates, LLC  
Westport, CT

**Sumit Sengupta**  
Managing Director, BMO Financial Group  
Evanston, IL  
(AS 77-80, IAC St 82-84)

**Claire E. (Corson) Skinner**  
CEO and Chairman (retired),  
Coachmen Industries  
Naples, FL  
(IAC 71)

**Sara Whiting**  
Founder and (retired) President,  
Florida Collegiate Summer League (FCSL)  
Windsor, FL

**Zhibai (Bill) Zheng**  
Chief Designer - Asia Pacific  
Fiat Chrysler Automobiles  
Shanghai, China  
(IAC 91, IAA 92-96)

## EX-OFFICIO TRUSTEES

**Trey Devey**  
President, Interlochen Center for the Arts  
Interlochen, MI

**Bruce A. Corner**  
President, Engagement Research  
(retired)  
Grawn, MI

**Ralph J. Cerny**  
President (retired),  
Munson Medical Center  
Traverse City, MI

**Nancy Bankoff Chalifour\***  
Arts Consultant  
Los Angeles, CA  
(IAC 63-64, 68-69, IAA 70-72,  
IAA St 73)

**Rebecca-Sen Chan\***  
Musician  
Los Altos Hills, CA  
(IAC 71)

**Richard F. Chormann\***  
Chairman, President and CEO (retired)  
First of America Bank Corporation  
Empire, MI

**Lawrence W. Clarkson**  
President (retired), Boeing Enterprises  
Seattle, WA  
(IAC 55-56)

**Don V. Cogman**  
Chairman, CC Investments, LLC  
Scottsdale, AZ

**Bruce Coppock\***  
President and Managing  
Director (former)  
Saint Paul Chamber Orchestra  
Mendota Heights, MN  
(IAC 66-68)

**Thomas H. Corson**  
CEO and Chairman of the Board (former)  
Coachmen Industries, Inc.  
Elkhart, IN

**Carl M. DeFaria**  
Vice President (retired)  
Federal Paper Board Company  
Chicago, IL and Maple City, MI

**Michael C. Dermody\***  
President and CEO, Dermody Properties  
Reno, NV

**Sandra A. Drew\***  
Community Leader and  
Music Teacher (retired)  
Longboat Key, FL  
(IAC 55)

**Douglas R. Eicher**  
Chief Revenue Officer, Music Prodigy  
Austin, TX  
(AS 74-77, IAA 78)

**Janet S. Eilber\***  
Artistic Director, Martha Graham Center  
New York City, NY  
(IAC 62-64, 66-68, IAA 64-69,  
IAC St 70, 72)

**Peter C. Erskine**  
Founder and Owner, Fuzzy Music LLC  
Director of Drumset Studies, USC  
Santa Monica, CA  
(IAA 68-71, IAC Fac 10)

**Kenneth C. Fischer\***  
President, University Musical Society,  
University of Michigan (retired)  
Ann Arbor, MI  
(IAC 55, 57-58, 60-62,  
Faculty/St 66)

**Beverly Patterson Frier\***  
Community Leader  
Naperville, IL

**Sheldon Goodman\***  
Investment Executive  
North Star Investment Services  
Chicago, IL

**Lowell J. Gruman\***  
Principal, Boomerang Catapult, LLC  
Traverse City, MI

**Karla J. Herbold**  
President, Catalyst Communications  
Palm Beach Gardens, FL  
(IAC 58, IAC St 87-89)

**T. Michael Jackson\***  
Director of Global,  
Corporate Relations (retired)  
Dow Corning Corporation  
Traverse City, MI

**Timothy M. Jackson\***  
Senior Vice President, Sales and Mar-  
keting, Globecast Americas  
Crystal Lake, IL  
(IAC St 80-81)

**John Kane\***  
President, Applied Technology Consulting  
Las Vegas, NV  
(IAA 74-76)

**Charles L. Kelly\***  
Dentist (retired)  
Traverse City, MI  
(AS 43-46)

**Sarah S. Lutman\***  
Principal, 8 Bridges Workshop  
St. Paul, MN  
(IAC 69)

**James Gary May\***  
President, Hopewell Land Partners, Ltd.  
Winter Haven, FL

**John E. McGarry**  
Managing Director,  
Goldman Sachs (retired)  
Seattle, WA  
(IAA 81-84, IAC St 84)

**Joel McNeely\***  
Film/Television Composer and Conductor  
Los Angeles, CA  
(IAA 74-77, IAA St 76)

**Nancy J. Meek\***  
Community Leader  
Frankfort, MI

**William G. Milliken\***  
Governor (former), State of Michigan  
Traverse City, MI

**Bonnie K. Mills**  
President, Mills Family Foundation  
Austin, TX

**Myrl Nofziger\***  
President, Hoogenboom-Nofziger Corp.  
Goshen, IN

**John H. Peterson\***  
Managing Director (retired)  
William Blair & Company  
Chicago, IL  
(IAC 60-61)

**William F. Pickard\***  
Chairman/CEO, Regal Plastics  
Roseville, MI

**Julie Quinn, MD\***  
Community Leader  
Traverse City, MI

**David S. Rhind\***  
Chairman of the Board,  
Kewaunee Scientific Corporation  
Chicago, IL  
(IAC 78-79)

**Anthony C. Ruda\***  
Sr. VP Investments, Wunderlich Securities  
Plymouth, MI

**Judith Dow Towsley Rumelhart\***  
Vice President  
Harry A. and Margaret D.  
Towsley Foundation  
Ann Arbor, MI  
(IAC 50-52)

**Judith B. Schlabach\***  
Community Leader  
Leland, MI  
(AS 55-56, IAC St 57)

**Alan E. Schwartz**  
Attorney at Law and Partner  
Honigman, Miller, Schwartz and Cohn  
Detroit, MI

**Harold T. Shapiro**  
President Emeritus, Woodrow Wilson  
School of Public & International Affairs  
Princeton University  
Princeton, NJ

**Isabel F. Smith**  
President, Isabel Francis Smith, Ltd.  
Farmington Hills, MI  
(AS 50, IAC 51-52, Faculty/St 76)

**Louis A. Smith\***  
Attorney at Law, Smith & Johnson  
Traverse City, MI

**Van P. Smith**  
Retired CEO, Ontario Corporation  
Muncie, IN

**Stanford L. Thompson**  
Founder and Executive Director  
Play On, Philly!  
Philadelphia, PA  
(IAC 00-03)

**James P. Spica\***  
Attorney at Law, Dickinson Wright PLLC  
Detroit, MI  
(IAC 72-74, IAA 74-75)

**Ronald F. Stowe\***  
Vice President  
Government Relations (retired)  
Eli Lilly and Company  
Washington, D.C.  
(IAC 55-62, IAA 62-63,  
IAA St 64, 66)

**James L. Tolley**  
Vice-President (retired), Chrysler Corp.  
Sarasota, FL

**Steve E. Upton**  
President, Frederick S. Upton Foundation  
Benton Harbor, MI

**Gary C. Valade**  
Executive Vice President (retired)  
Chrysler Corporation  
Auburn Hills, MI

**William P. Vittoe\***  
President (former), Michigan Bell Telephone  
Grosse Pointe Farms, MI

**Elliot Weissbluth\***  
CEO, HighTower  
Chicago, IL  
(IAC 79-81, IAC St 84, 87-88)

**Katherine E. White\***  
Professor of Law, Wayne State  
University Law School  
Ann Arbor, MI  
(AS 79-80)

**Karen Wolff\***  
Dean, School of Music (retired)  
University of Michigan  
Ann Arbor, MI

**Shirley Young\***  
Shirley Young Associates  
New York, NY

## OFFICERS

**Rory Baker**  
Executive Director  
Interlochen Presents

**Camille L. Colatosti**  
Provost

**Brittany Verner**  
Corporate Secretary

**Trey Devey**  
President

**John Bogley**  
Vice President  
Philanthropy

**Patrick M. Kessel**  
Vice President  
Finance and Operations

**Katharine Laidlaw**  
Vice President  
Strategic Communications  
and Engagement

Those who have served previously on the Board of Trustees are vital to Interlochen's ongoing growth and success. We thank you, and celebrate your service.



INTERLOCHEN  
*Center for the Arts*

[www.interlochen.org](http://www.interlochen.org)



Interlochen Center for the Arts • P.O. Box 199 • Interlochen, MI 49643